

NOTICE TO MARINERS

Notice of activities associated with operations on Beatrice Offshore Wind Farm

Date of Issue	23/09/2020	Notice Number	NTM-BE-00008 - Rev 02
---------------	------------	---------------	-----------------------

BOWL R.O.V Subsea Survey using Glomar Wave and Icen Spirit.

Contact Details for Marine Coordination and Fisheries Liaison

The following contact can provide more information if required:

Telephone Number (Day Operations)	+44 (0) 2392 272104
Emergency Contact (24/7)	+44 (0) 7342 028207
Email for Marine Coordinator	MC.Bowl@sse.com
Address	Grey Coast Building Harbour Quay WICK Caithness KW1 5ET

For all fisheries enquiries, please contact the parties listed below:

Primary Contact	Alex Winrow-Giffin - alex@brownmay.com +44 (0) 7760 160039
Secondary Contact	John Watt – john.watt@brownmay.com +44 (0) 7590 880746
Address	Brown and May Marine Progress Way Mid Suffolk Business Park Eye, Suffolk IP23 7HU

1. Area of Planned Activity

Surveys will take place within the BOWL site using vessels Glomar Wave and Icen Spirit on selected WTG foundations, both Offshore Transmission Modules, selected inter array cable routes and selected export cable routes. Coordinates of the WTG's and OTM's to be surveyed are given in Table 1 below, inter array cable routes to be surveyed are listed in Table 2. Export Cable routes to be surveyed are listed in Table 3. A visual representation of the locations is provided in Figure 1. Works are due to commence on the 5th of October and for between 15 and 30 days, weather conditions dependant.

Figure 1 - WTG's for ROV Survey

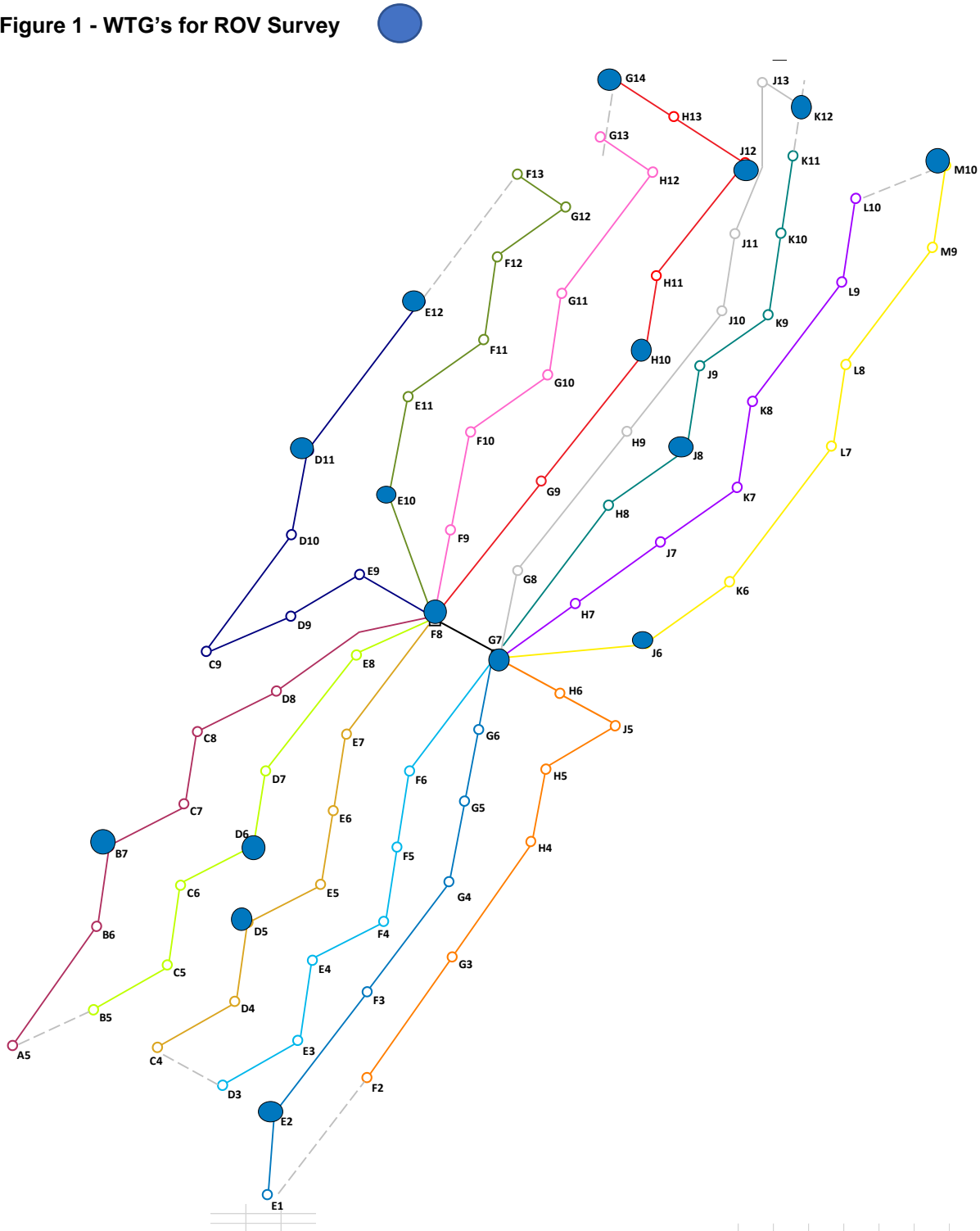


Table 1 – WTG Jacket Survey Locations

NOTICE TO MARINERS – NTM-BE-00008 – Rev 02

Location	Lat	Long	A Marine Growth	B Flooded Member Detection	C Cathodic Protection	D Jacket Foundation
J06	58°14.812`N	002°50.795`W	✓	✓	✓	✓
D06	58°13.739`N	002°56.471`W	✓	✓	✓	✓
E10	58°16.438`N	002°54.456`W	✓	✓	✓	✓
J12	58°18.538`N	002°49.530`W	✓	✓	✓	✓
K12	58°18.752`N	002°48.403`W	✓	✓	✓	✓
E02	58°11.470`N	002°56.128`W	✓	✓	✓	✓
J08	58°16.055`N	002°50.373`W	✓		✓	✓
M10	58°17.938`N	002°46.571`W	✓		✓	✓
D11	58°16.844`N	002°55.373`W	✓		✓	✓
G14	58°19.351`N	002°51.362`W	✓		✓	✓
D05	58°13.117`N	002°56.626`W	✓	✓	✓	
B07	58°13.929`N	002°58.456`W	✓	✓	✓	
H10	58°17.082`N	002°51.079`W	✓	✓	✓	
E12	58°17.680`N	002°54.037`W	✓	✓	✓	
OTM1	58°15.004`N	002°52.834`W	✓	✓	✓	✓
OTM2	58°15.411`N	002°53.750`W	✓	✓	✓	✓

Cross braces only

Figure 2 – Inter Array Cable Routes

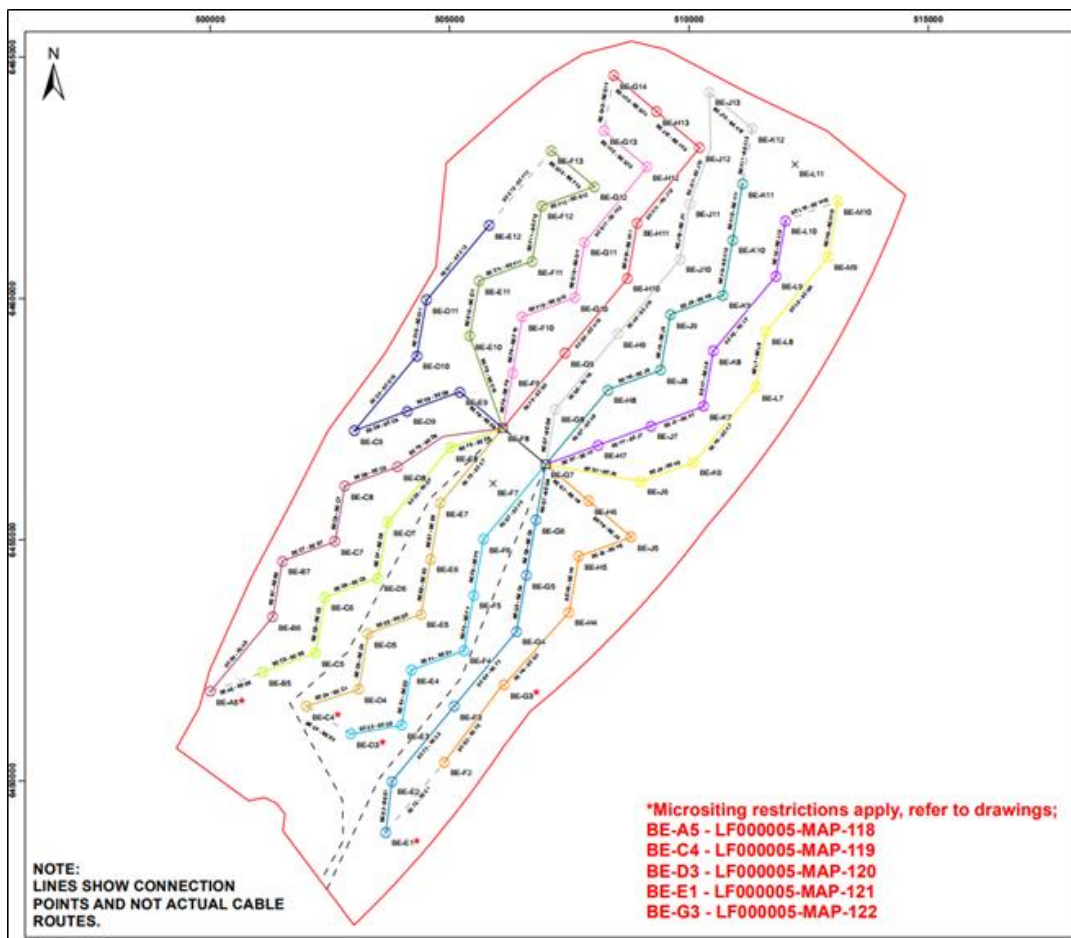


Table 2 – Inter Array Cable Survey Locations

E Cable Survey				
Cable Location	String	KP1	KP2	Length (m)
H05-H04	Amber	0.45	1.25	800
H04-G03	Amber	0.4	2.06	1660
G04-F03	Blue	0.1	2.05	1950
E02-E01	Blue	0.03	1.1	1070
E05-D05	Gold	0.02	1.21	1190
B06-A05	Maroon	0.1	0.81	710
F08-E09	Navy	0.1	1.3	1200
D09-C09	Navy	0.1	1.4	1300
G12-F13	Olive	0.01	0.6	590
F09-F10	Pink	0.3	0.5	200
F10-G10	Pink	1.1	1.35	250
G13-G14	Red	0.1	1.2	1100
H09-J10	Silver	0.8	2.1	1300
J09-K09	Teal	0.01	1.29	1280

Figure 3 – Export Cable Route

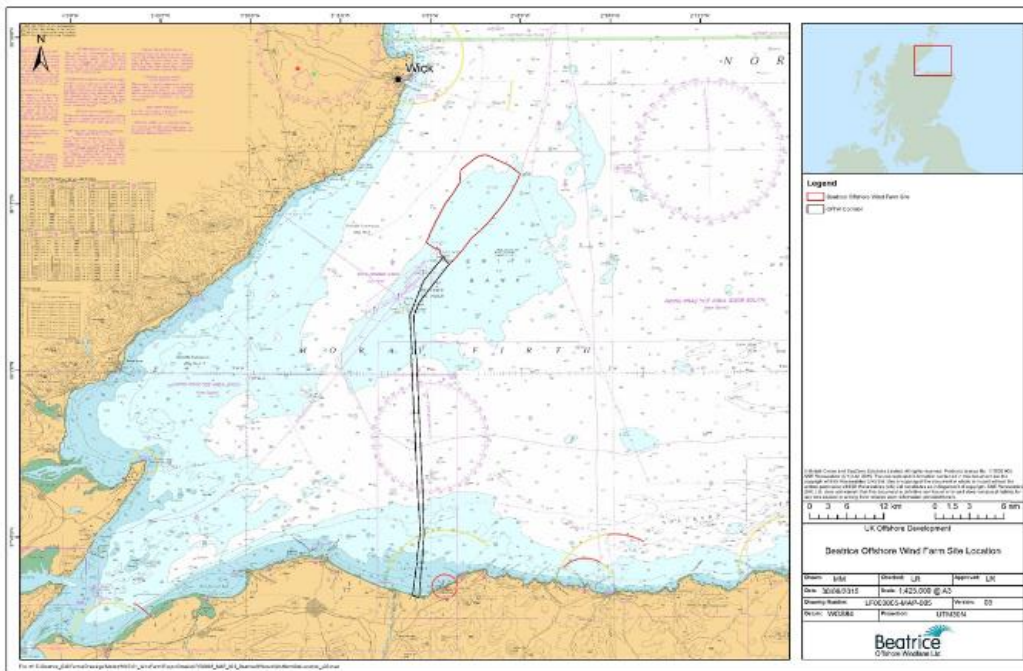


Table 3 – Export Cable Survey Locations

E Cable Survey	Route KP (0=Landfall for EC1 & EC2) (km)		Length (m)
	From	To	
EC1	31	32.3	1300
EC1	34.7	35.7	1000
EC1	45.5	46.8	1300
EC1	67.2	68	800
EC2	32.5	34	1500
EC2	42.5	43.5	1000
EC2	56.3	59.9	3600
EC2	61.2	62.6	1400
EC2	68.5	70.1	1600
EC3	0.1	1.6	1500

2. Activity Description

On behalf of BOWL, vessels Glomar Wave and Icen Spirit will conduct surveys of 16 Wind Turbine Generator Jackets and Offshore Transmission Modules listed in Table 1, 14 inter-array cables listed in Table 2 and 10 sections of Export Cables 1 and 2 listed in Table 3.

3. Vessel associated with this Activity

MV Glomar Wave	
General Description and Dimensions:	65.9 Meter Accommodation Vessel
Call Sign:	3FXF4
MMSI:	356301000
Onshore Representative:	Beatrice Offshore Windfarm Grey Coast Building Harbour Quay WICK Caithness, KW1 5ET Martin Sutherland – SSE Renewables Tel: 07384241258 Email: Martin.Sutherland@sse.com



MV Icení Spirit	
General Description and Dimensions:	16 Meter High Speed Craft
Call Sign:	2DCF8
MMSI:	235077743
Onshore Representative:	Beatrice Offshore Windfarm Grey Coast Building Harbour Quay WICK Caithness, KW1 5ET Martin Sutherland – SSE Renewables Tel: 07384241258 Email: Martin.Sutherland@sse.com



4. General Safety Advice

All vessels engaged in the construction activity will exhibit appropriate lights and shapes prescribed by the International Regulations for Preventing Collisions at Sea; relative to their operations. All vessels engaged in the activity will also transmit an Automatic Identification System (AIS) message.

ALL VESSELS ARE REQUESTED to give Glomar Wave a wide berth whilst surveying due to being restricted in her ability to manoeuvre.

MARINERS ARE REMINDED to navigate with caution and keep continued watch on VHF Ch. 70 / 16 when navigating the area.

5. Fisheries Liaison

Fisheries liaison associated with the activity will be co-ordinated by Brown and May Marine. For any commercial fishery queries please contact:

Alex Winrow-Giffin Tel Mobile +44 (0) 7760 160039 alex@brownmay.com

John Watt Tel Mobile +44 (0) 7590 880746 john.watt@brownmay.com

6. Distribution List

NOTICE TO MARINERS – NTM-BE-00008 – Rev 02



The distribution of this notice is as per email recipient's header. A central list of recipients is maintained by the Marine Coordinator; if you are not the appropriate recipient of these notices, or do not wish to receive the notices in the future, please contact us at the address included in Section 1 of this notice.

A copy of this notice can also be found at <https://www.beatricewind.com/>