

# Weekly Notice of Operations (WNoO)

## Beatrice Offshore Windfarm Limited

### Construction Operations



Issue Date: 01<sup>st</sup> July 2019  
 LF000005-WNO-013: Weekly Notice of Operations - Rev 112

#### Notice of Operations at Beatrice Offshore Wind Farm

#### Work Planned for the Period 01.07.2019 to 07.07.2019

Construction of the Beatrice Offshore Wind Farm commenced on the 1<sup>st</sup> of April 2017. This notice will be updated weekly giving information on the progress and resources involved in the offshore project. The intention is to give an overview of activities and vessels involved. Should anyone have questions regarding the operations, we kindly ask you to put them forward well in advance.

Beatrice Offshore Windfarm Limited (BOWL) is developing the Beatrice Offshore Wind Farm in the 'Outer' Moray Firth on the north-western point of the Smith Bank, approximately 7 nm off the Caithness coastline. The development site will cover an approximate area of up to 130km<sup>2</sup> and will consist of 84 7MW offshore wind turbines (with a total capacity of 588MW) and two HVAC Offshore Transformer Modules (OTM). Water depths in the area range from approximately 38m below LAT in the south of the field to 60m below LAT in the north. The generated power will be transmitted to the grid via two subsea export / transmission cables with a landfall near Portgordon to the south of the field and grid connection at Blackhillock. The transmission cables cover a route of approximately 38 nm from the wind farm boundary back to the landfall. The Beatrice Offshore Wind Farm development area is highlighted in red below, the OFTW cable corridor in black.

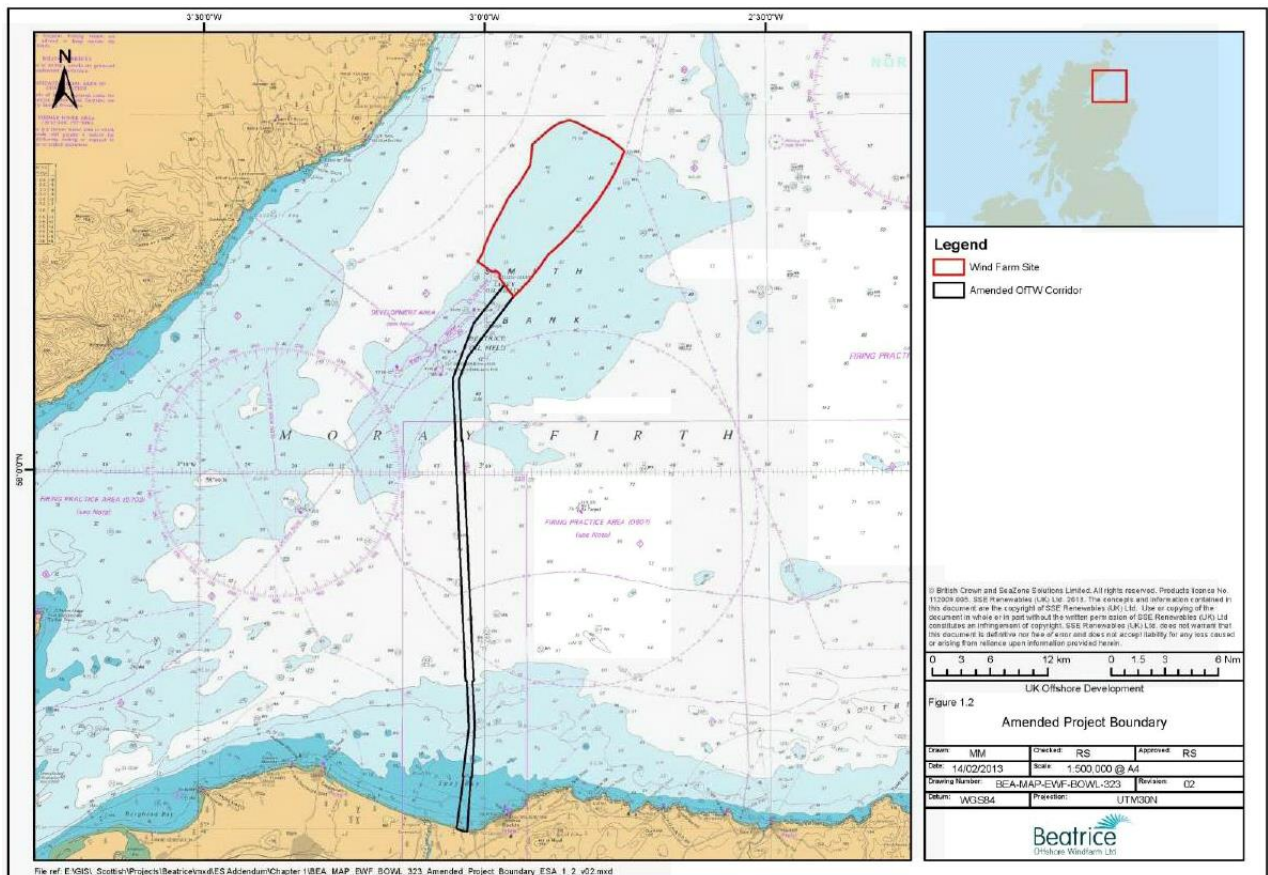


Fig. 1 Beatrice Offshore Wind Farm Location

# Weekly Notice of Operations (WNoO)

## Beatrice Offshore Windfarm Limited

### Construction Operations

Issue Date: 01<sup>st</sup> July 2019

LF000005-WNO-013: Weekly Notice of Operations - Rev 112

#### 1. Contact Details for Marine Coordination

The following contact can provide more information if required. Please note that specific queries can also be addressed to the relevant vessel or shore based representative.

Telephone Number	+44 (0) 3302 020329
Emergency Contact (24/7)	+44 (0) 7342 028207
Email for Marine Coordinator	<a href="mailto:mc.bowl@sse.com">mc.bowl@sse.com</a>
Address	Grey Coast Building, Harbour Quay, Wick Caithness KW1 5EN

#### 2. Ongoing Operations

##### 2.1 Foundations – Maintenance & Remedial Operations

Seaway 7's maintenance programme on foundations continues, utilising the crew transfer vessels Rix Cheetah, Green Storm, Rix Lion and Rix Lynx.

Rix Cheetah	
General Description and Dimensions:	Crew Transfer Vessel – 25 x 7 m
Call Sign:	2GGY7
MMSI:	235097312
Onshore Representative:	Seaway 7 Wick College Building, 1st Floor 1 The Shore, Wick, Caithness, Scotland Email. <a href="mailto:beatrice-mc@subsea7.com">beatrice-mc@subsea7.com</a> Rene Alferink Tel + 31 630 405584 Vincent Van Velzen Tel + 31 630 406174



# Weekly Notice of Operations (WNoO)


Beatrice Offshore Windfarm Limited


Construction Operations



Issue Date: 01<sup>st</sup> July 2019

LF000005-WNO-013: Weekly Notice of Operations - Rev 112

Green Storm	
<b>General Description and Dimensions:</b>	Crew Transfer Vessel – 25.75 x 10.06 m
<b>Call Sign:</b>	2EXU3
<b>MMSI:</b>	235089035
<b>Onshore Representative:</b>	Seaway 7 Wick College Building, 1st Floor 1 The Shore, Wick, Caithness, Scotland Email. <a href="mailto:beatrice-mc@subsea7.com">beatrice-mc@subsea7.com</a> Rene Alferink Tel + 31 630 405584 Vincent Van Velzen Tel + 31 630 406174
	

Rix Lion	
<b>General Description and Dimensions:</b>	Crew Transfer Vessel – 26 x 10 x 2.5 m
<b>Call Sign:</b>	2HOH3
<b>MMSI:</b>	235105282
<b>Onshore Representative:</b>	Seaway 7 Wick College Building, 1st Floor 1 The Shore, Wick, Caithness, Scotland Email. <a href="mailto:beatrice-mc@subsea7.com">beatrice-mc@subsea7.com</a> Rene Alferink Tel + 31 630 405584 Vincent Van Velzen Tel + 31 630 406174
	

# Weekly Notice of Operations (WNoO)

## Beatrice Offshore Windfarm Limited

### Construction Operations

Issue Date: 01<sup>st</sup> July 2019

LF000005-WNO-013: Weekly Notice of Operations - Rev 112

Rix Lynx	
<b>General Description and Dimensions:</b>	Crew Transfer Vessel – 26 x 7.0 x 2.0 m
<b>Call Sign:</b>	2JGQ6
<b>MMSI:</b>	235115745
<b>Onshore Representative:</b>	Seaway 7 Wick College Building, 1st Floor 1 The Shore, Wick, Caithness, Scotland Email. <a href="mailto:beatrice-mc@subsea7.com">beatrice-mc@subsea7.com</a> Rene Alferink Tel + 31 630 405584 Vincent Van Velzen Tel + 31 630 406174



# Weekly Notice of Operations (WNoO)

## Beatrice Offshore Windfarm Limited

### Construction Operations

---

Issue Date: 01<sup>st</sup> July 2019

LF000005-WNO-013: Weekly Notice of Operations - Rev 112

## 2.2 Offshore Transmission Modules (OTMs) Commissioning Works

Siemens Transmission and Distribution Ltd (STDL) are completing electrical commissioning operations on both OTMs.

The following assets are now under the control of the SSE operational safety rules: EC1, EC2 & EC3. OTM1 & OTM2 and all Strings on site.

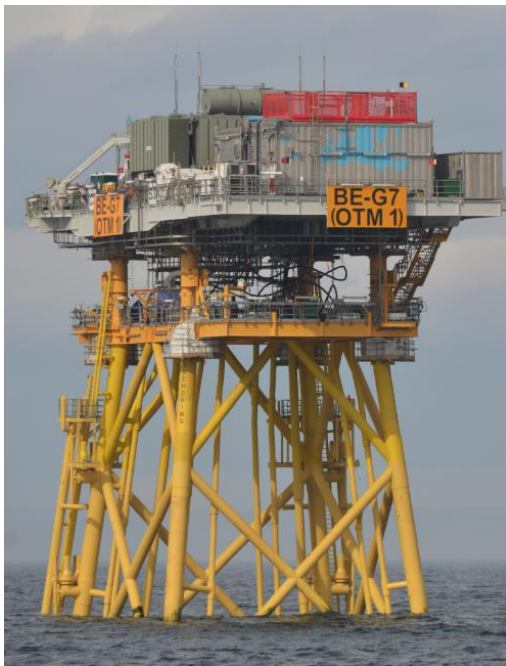


Fig. 2 OTM 1



Fig. 3 OTM2

### 2.2.1 Vessels Involved in Activity

The offshore supply vessel Skandi Constructor acts as a hotel vessel and 'walk to work' service operations vessel (SOV) for the commissioning works on the OTMs, supported by the CTV Dalby Ribble.

# Weekly Notice of Operations (WNoO)

Beatrice Offshore Windfarm Limited


Construction Operations



Issue Date: 01<sup>st</sup> July 2019

LF000005-WNO-013: Weekly Notice of Operations - Rev 112

Skandi Constructor	
General Description and Dimensions:	Service Operations Vessel (SOV) L: 120m B: 25m D: 7.2m
Call Sign:	C6ZH8
MMSI:	311055900
Onshore Representative:	John Davidson Siemens Transmission & Distribution Ltd Princess Road Manchester M20 2UR Tel +44 1614 466610 john.s.davidson@siemens.com
	

Dalby Ribble	
General Description and Dimensions:	Crew Transfer Vessel - L:25.75 x B:10 m
Call Sign:	2IVX5
MMSI:	235113236
Onshore Representative:	John Davidson Siemens Transmission & Distribution Ltd Princess Road Manchester M20 2UR Tel +44 1614 466610 john.s.davidson@siemens.com
	

# Weekly Notice of Operations (WNoO)

## Beatrice Offshore Windfarm Limited

### Construction Operations



Issue Date: 01<sup>st</sup> July 2019  
 LF000005-WNO-013: Weekly Notice of Operations - Rev 112

### 2.3 Offshore Installation of Wind Turbines

Siemens Gamesa Renewable Energy (SGRE) have now completed the installation and commissioning of 84 x 7.0 MW wind turbines in the Beatrice Offshore Windfarm (BOWL).

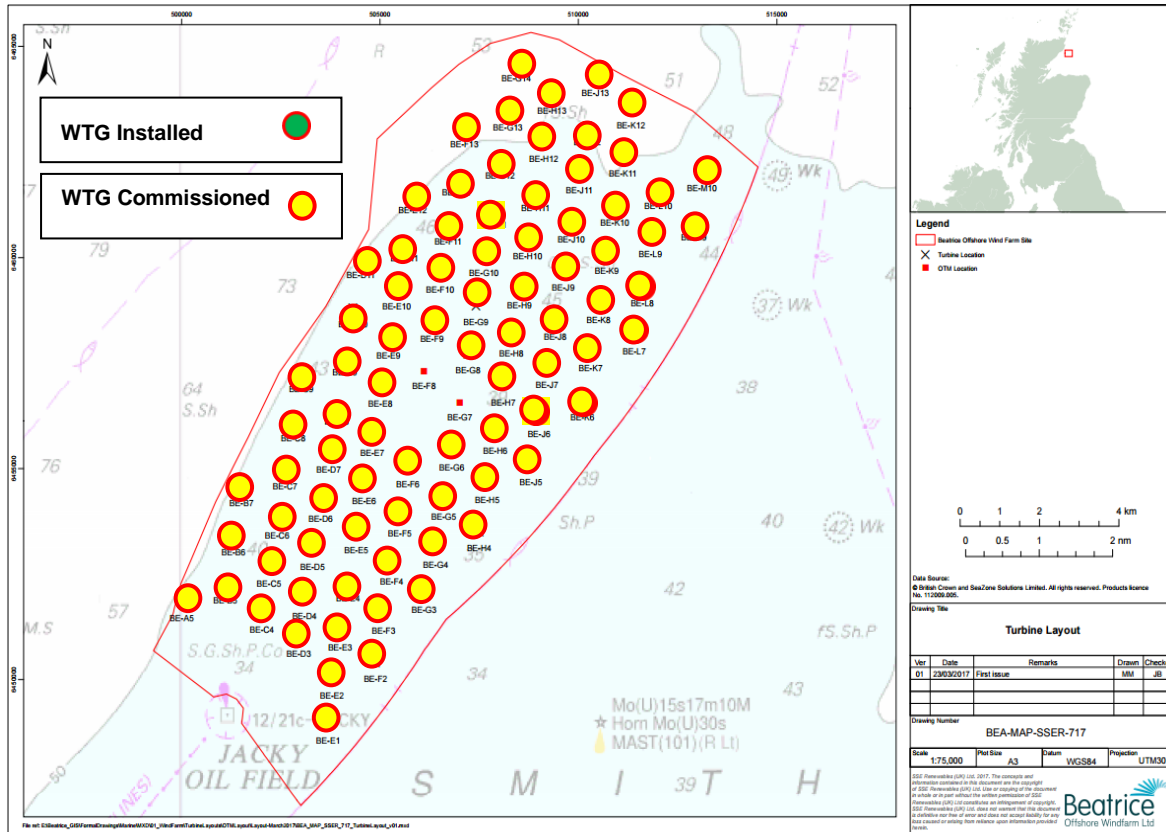


Fig. 4 Locations of WTG in the BOWL Construction Site

Table 1. WTG Installation and Commissioning Progress

Turbine installation completed at: 84 Locations

Turbine commissioning complete at: 84 Locations

Location ID	Latitude WGS84	Longitude WGS84	WTG Installed	WTG Commissioned
BE-A5	58° 12.471' N	002° 59.996' W	30.10.2018	12.11.2018
BE-B5	58° 12.687' N	002° 58.873' W	01.11.2018	16.11.2018
BE-B6	58° 13.308' N	002° 58.664' W	26.11.2018	07.12.2018
BE-B7	58° 13.929' N	002° 58.456' W	25.11.2018	06.12.2018
BE-C4	58° 12.307' N	002° 57.948' W	26.09.2018	09.10.2018
BE-C5	58° 12.902' N	002° 57.749' W	03.10.2018	28.10.2018

# Weekly Notice of Operations (WNoO)

## Beatrice Offshore Windfarm Limited

### Construction Operations



Issue Date: 01<sup>st</sup> July 2019

LF000005-WNO-013: Weekly Notice of Operations - Rev 112

Location ID	Latitude WGS84	Longitude WGS84	WTG Installed	WTG Commissioned
BE-C6	58° 13.524' N	002° 57.541' W	19.10.2018	05.11.2018
BE-C7	58° 14.144' N	002° 57.332' W	10.12.2018	30.12.2018
BE-C8	58° 14.766' N	002° 57.124' W	21.12.2018	07.01.2019
BE-C9	58° 15.386' N	002° 56.915' W	30.12.2019	17.01.2019
BE-D3	58° 11.995' N	002° 57.002' W	20.08.2018	03.09.2018
BE-D4	58° 12.497' N	002° 56.834' W	28.09.2018	11.10.2018
BE-D5	58° 13.117' N	002° 56.626' W	06.10.2018	22.10.2018
BE-D6	58° 13.739' N	002° 56.417' W	18.10.2018	16.11.2018
BE-D7	58° 14.359' N	002° 56.209' W	15.10.2018	28.10.2018
BE-D8	58° 14.981' N	002° 55.999' W	23.12.2018	03.01.2019
BE-D9	58° 15.602' N	002° 55.790' W	02.01.2019	16.01.2019
BE-D10	58° 16.223' N	002° 55.582' W	15.01.2018	28.01.2019
BE-D11	58° 16.844' N	002° 55.373' W	05.01.2019	16.01.2018
BE-E1	58° 10.900' N	002° 56.256' W	08.10.2018	22.10.2018
BE-E2	58° 11.470' N	002° 56.128' W	02.09.2018	15.09.2018
BE-E3	58° 12.090' N	002° 55.920' W	17.11.2018	29.11.2018
BE-E4	58° 12.712' N	002° 55.710' W	05.11.2018	21.11.2018
BE-E5	58° 13.333' N	002° 55.502' W	08.09.2018	19.09.2018
BE-E6	58° 13.954' N	002° 55.293' W	09.09.2018	06.10.2018
BE-E7	58° 14.575' N	002° 55.084' W	06.09.2018	17.09.2018
BE-E8	58° 15.196' N	002° 54.875' W	14.10.2018	29.10.2018
BE-E9	58° 15.817' N	002° 54.665' W	04.01.2019	30.01.2019
BE-E10	58° 16.438' N	002° 54.456' W	29.01.2019	11.02.2019
BE-E11	58° 17.059' N	002° 54.247' W	02.02.2019	12.02.2019
BE-E12	58° 17.680' N	002° 54.037' W	18.01.2018	30.01.2019
BE-F2	58° 11.685' N	002° 55.005' W	23.07.2018	06.08.2018
BE-F3	58° 12.306' N	002° 54.796' W	01.09.2018	12.09.2018
BE-F4	58° 12.927' N	002° 54.588' W	15.09.2018	28.09.2018
BE-F5	58° 13.548' N	002° 54.378' W	22.08.2018	13.09.2018
BE-F6	58° 14.168' N	002° 54.169' W	23.08.2018	09.08.2018
BE-F9	58° 16.031' N	002° 53.540' W	01.03.2019	13.03.2019
BE-F10	58° 16.653' N	002° 53.330' W	03.03.2019	26.03.2018
BE-F11	58° 17.274' N	002° 53.120' W	01.12.2018	21.12.2018
BE-F12	58° 17.894' N	002° 52.911' W	20.01.2019	06.02.2019
BE-F13	58° 18.516' N	002° 52.701' W	11.11.2018	13.12.2018
BE-G3	58° 12.544' N	002° 53.726' W	14.08.2018	25.08.2018
BE-G4	58° 13.142' N	002° 53.464' W	12.08.2018	24.08.2018
BE-G5	58° 13.762' N	002° 53.254' W	02.08.2018	22.08.2018
BE-G6	58° 14.384' N	002° 53.044' W	24.07.2018	23.08.2018
BE-G8	58° 15.625' N	002° 52.625' W	24.01.2019	05.02.2019
BE-G9	58° 16.247' N	002° 52.415' W	05.04.2019	16.04.2019
BE-G10	58° 16.867' N	002° 52.204' W	12.02.2019	25.02.2019
BE-G11	58° 17.488' N	002° 51.994' W	16.02.2019	28.02.2019
BE-G12	58° 18.109' N	002° 51.784' W	02.02.2019	13.02.2019
BE-G13	58° 18.730' N	002° 51.574' W	04.12.2018	15.12.2018
BE-G14	58° 19.351' N	002° 51.362' W	25.02.2019	19.03.2019



# Weekly Notice of Operations (WNoO)

## Beatrice Offshore Windfarm Limited

### Construction Operations



Issue Date: 01<sup>st</sup> July 2019

LF000005-WNO-013: Weekly Notice of Operations - Rev 112

Location ID	Latitude WGS84	Longitude WGS84	WTG Installed	WTG Commissioned
BE-H4	58° 13.356' N	002° 52.339' W	31.07.2018	20.08.2018
BE-H5	58° 13.977' N	002° 52.130' W	20.07.2018	03.08.2018
BE-H6	58° 14.598' N	002° 51.920' W	19.07.2018	01.08.2018
BE-H7	58° 15.219' N	002° 51.709' W	24.12.2018	06.01.2019
BE-H8	58° 15.840' N	002° 51.499' W	16.08.2018	24.11.2018
BE-H9	58° 16.461' N	002° 51.289' W	17.09.2018	24.11.2018
BE-H10	58° 17.082' N	002° 51.079' W	02.12.2018	15.12.2018
BE-H11	58° 17.703' N	002° 50.867' W	05.02.2019	23.02.2019
BE-H12	58° 18.324' N	002° 50.657' W	23.01.2019	03.02.2019
BE-H13	58° 18.944' N	002° 50.446' W	03.02.2019	14.02.2019
BE-J5	58° 14.192' N	002° 51.005' W	14.07.2018	10.08.2018
BE-J6	58° 14.812' N	002° 50.795' W	13.05.2019	25.05.2019
BE-J7	58° 15.433' N	002° 50.585' W	18.04.2019	30.04.2019
BE-J8	58° 16.055' N	002° 50.373' W	04.03.2019	10.04.2019
BE-J9	58° 16.675' N	002° 50.163' W	06.01.2019	19.01.2019
BE-J10	58° 17.296' N	002° 49.952' W	30.03.2019	12.04.2019
BE-J11	58° 17.917' N	002° 49.741' W	26.12.2018	14.01.2019
BE-J12	58° 18.538' N	002° 49.530' W	20.02.2019	21.03.2019
BE-J13	58° 19.159' N	002° 49.319' W	24.02.2019	21.03.2019
BE-K6	58° 15.027' N	002° 49.669' W	12.05.2019	23.05.2019
BE-K7	58° 15.648' N	002° 49.459' W	10.05.2019	21.05.2019
BE-K8	58° 16.269' N	002° 49.247' W	26.03.2019	10.04.2019
BE-K9	58° 16.890' N	002° 49.036' W	08.04.2019	23.09.2019
BE-K10	58° 17.510' N	002° 48.825' W	30.04.2019	16.05.2019
BE-K11	58° 18.131' N	002° 48.614' W	12.04.2019	24.04.2019
BE-K12	58° 18.752' N	002° 48.403' W	11.04.2019	25.04.2019
BE-L7	58° 15.862' N	002° 48.333' W	22.04.2019	03.05.2019
BE-L8	58° 16.482' N	002° 48.122' W	11.05.2019	23.05.2019
BE-L9	58° 17.104' N	002° 47.910' W	27.04.2019	08.05.2019
BE-L10	58° 17.724' N	002° 47.698' W	29.04.2019	11.04.2019
BE-M9	58° 17.317' N	002° 46.784' W	28.04.2019	10.05.2019
BE-M10	58° 17.938' N	002° 46.571' W	14.05.2019	29.05.2019

# Weekly Notice of Operations (WNoO)

## Beatrice Offshore Windfarm Limited

### Construction Operations

---

Issue Date: 01<sup>st</sup> July 2019

LF000005-WNO-013: Weekly Notice of Operations - Rev 112

#### 2.3.1 Activity Description

All commissioning works are now complete.



**Fig. 5** Siemens SWT-7.0-154 WTG installed at Beatrice OWF

# Weekly Notice of Operations (WNoO)

## Beatrice Offshore Windfarm Limited

### Construction Operations

Issue Date: 01<sup>st</sup> July 2019  
LF000005-WNO-013: Weekly Notice of Operations - Rev 112

#### 2.4 Operational & Maintenance (O & M)

Custody of all Strings has now been transferred from Project Construction to Operations and Maintenance (O & M).

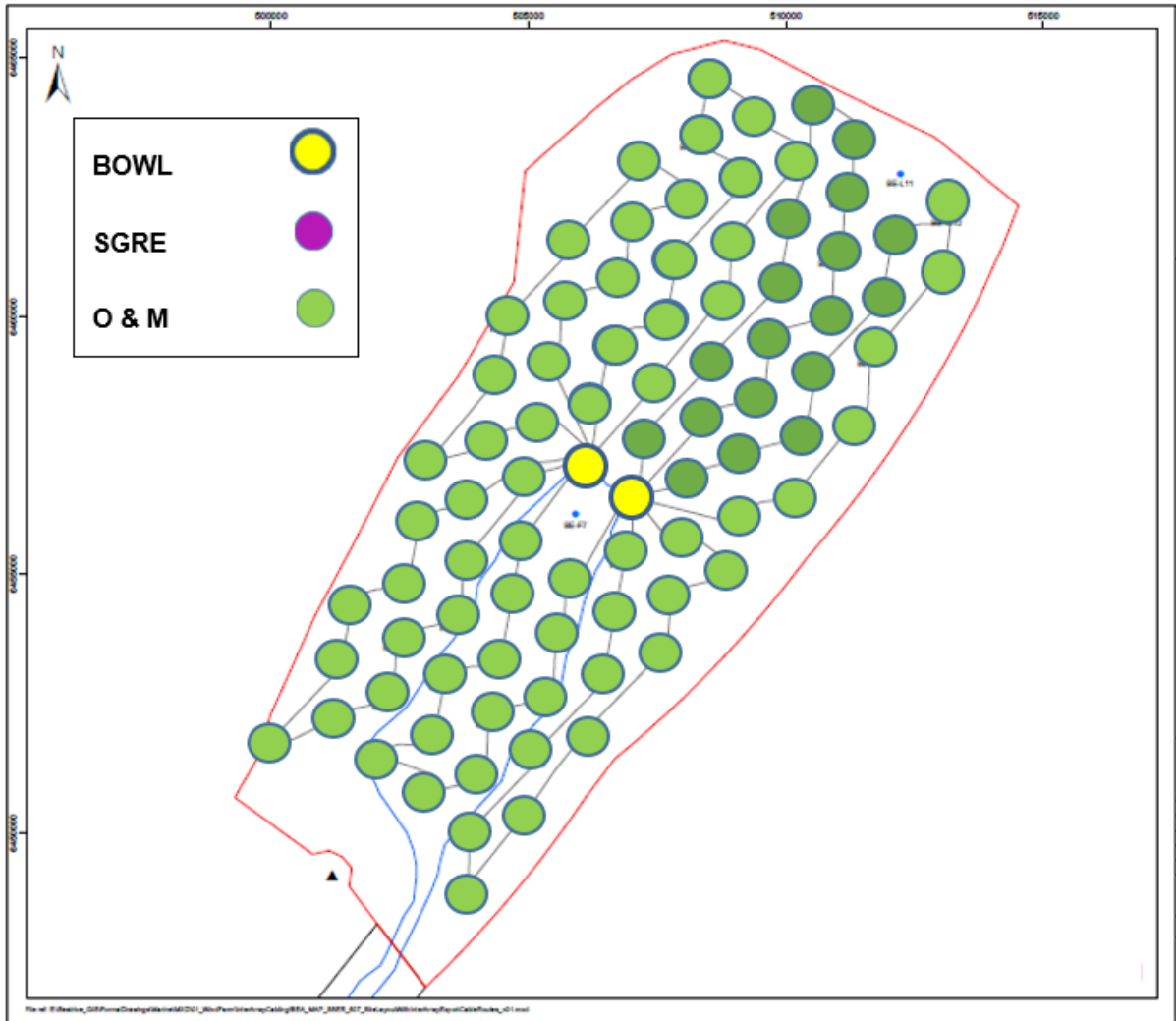


Fig. 6 Custody of Assets Chart

# Weekly Notice of Operations (WNoO)

## Beatrice Offshore Windfarm Limited

### Construction Operations

Issue Date: 01<sup>st</sup> July 2019

LF000005-WNO-013: Weekly Notice of Operations - Rev 112

Siemens Gamesa Renewable Energy (SGRE Service) has taken over operational control of the scheduled maintenance and troubleshooting of all WTGs.

To assist them in this regard they have engaged the CTVs Seacat Mischief, Seacat Magic and an Airbus H145 helicopter operated by the German company WIKING Helicopter Service GmbH.

The helicopter is based in a temporary hanger at Wick airport and will be used to transport SGRE technicians to work on the turbines when conditions to transfer by CTV are exceeded, but flying conditions are within limits.

#### 2.4.1 Vessels & Aircraft Engaged in Activity

<b>Seacat Mischief</b>	
<b>General Description and Dimensions:</b>	Crew Transfer Vessel (CTV) L: 25m / B: 11m
<b>Call Sign:</b>	
<b>MMSI:</b>	
<b>Onshore Representative:</b>	Barry Lucken Offshore Service Manager Beatrice Offshore Windfarm Ltd +44 7921 836268 Barry.lucken@siemensgamesa.com
	


# Weekly Notice of Operations (WNoO)

## Beatrice Offshore Windfarm Limited

### Construction Operations

Issue Date: 01<sup>st</sup> July 2019

LF000005-WNO-013: Weekly Notice of Operations - Rev 112

<b>Seacat Magic</b>	
<b>General Description and Dimensions:</b>	Crew Transfer Vessel (CTV) L: 23m / B: 8m
<b>Call Sign:</b>	2JDI2
<b>MMSI:</b>	235114973
<b>Onshore Representative:</b>	Barry Lucken Offshore Service Manager Beatrice Offshore Windfarm Ltd +44 7921 836268 barry.lucken@siemensgamesa.com
	

<b>Wiking Helicopter H145</b>	
<b>General Description and Dimensions:</b>	Airbus H145 Twin Engine, multi-purpose helicopter. LOA 13.63 x 3.29 x 4.00 m – Rotor diameter 11.0 m
<b>Call Sign:</b>	WHS2AG 'Wiking Two Alpha Golf'
<b>Onshore Representative:</b>	Barry Lucken Offshore Service Manager Beatrice Offshore Windfarm Ltd +44 7921 836268 Barry.lucken@siemensgamesa.com
	

# Weekly Notice of Operations (WNoO)

## Beatrice Offshore Windfarm Limited

### Construction Operations

Issue Date: 01<sup>st</sup> July 2019  
 LF000005-WNO-013: Weekly Notice of Operations - Rev 112

## 2.5 Scientific Equipment

The following table shows the locations of the University of Aberdeen’s scientific moorings, which are currently located within the construction site.

Name	As laid coordinates (WGS84 datum)		Characteristics
160	58°17.648’N	002°49.931’W	Subsurface with transponder
161	58°13.000’N	002°56.011’W	Subsurface with transponder.
162	58°18.176’N	002°54.124’W	Subsurface with transponder.
164	58°12.817’N	002°51.694’W	Subsurface with transponder
146	58°15.231’N	002°53.321’W	Subsurface with transponder
150	58°16.660’N	002°51.076’W	Subsurface with transponder

The moorings support sound recording equipment and acoustic loggers that record echolocation clicks of dolphins and porpoises (see images at the foot of this notice) Subsurface moorings fitted with acoustic releases extend no more than three metres vertically from the seabed. Subsurface moorings without acoustic releases extend no more than two metres vertically from the seabed.

A Notice to Mariners will be issued when the moorings are permanently discontinued.

For information and enquiries please contact:

Tim Candido- Barton,  
 Lighthouse Field Station, University of Aberdeen,  
 George Street, Cromarty,  
 Ross-shire,  
 IV11 8YL.  
 Tel: +44 (0)1381 600548.  
[t.r.barton@abdn.ac.uk](mailto:t.r.barton@abdn.ac.uk)



Fig. 8 Examples of equipment that the above moorings support

# Weekly Notice of Operations (WNoO)

## Beatrice Offshore Windfarm Limited

### Construction Operations

Issue Date: 01<sup>st</sup> July 2019

LF000005-WNO-013: Weekly Notice of Operations - Rev 112

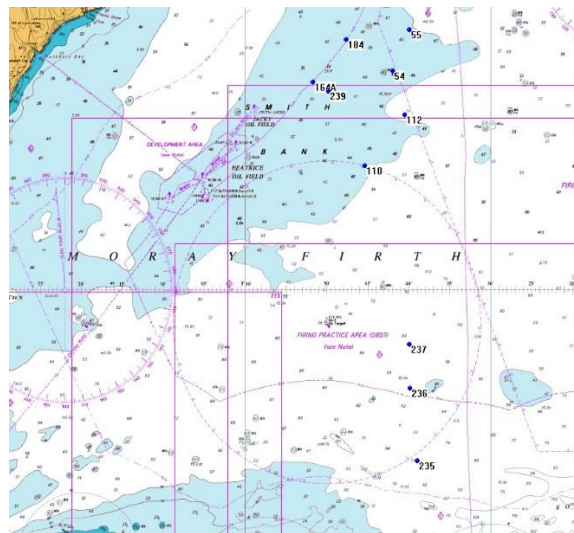
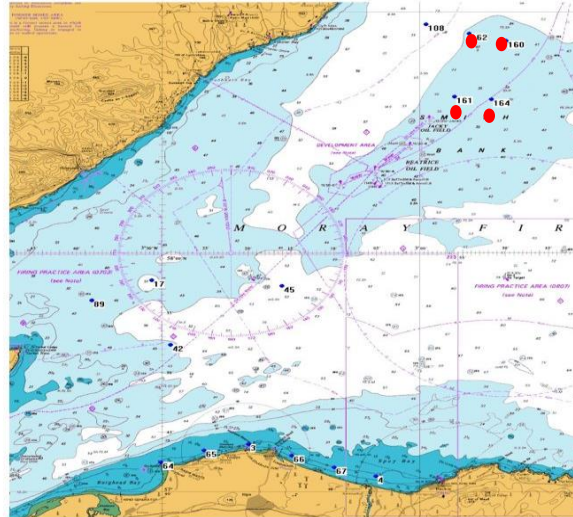


Fig. 9 Scientific equipment locations

### 3. General Safety Advice

All vessels engaged in the activity will exhibit appropriate lights and shapes prescribed by the International Regulations for Preventing Collisions at Sea; relative to their operations. All vessels engaged in the activity will also transmit an Automatic Identification System (AIS) message.

# Weekly Notice of Operations (WNoO)

## Beatrice Offshore Windfarm Limited

### Construction Operations

---



**Issue Date: 01<sup>st</sup> July 2019**

**LF000005-WNO-013: Weekly Notice of Operations - Rev 112**

The Secretary of State has authorised the use of the following safety zones as per Notice to Mariners LF000005-NTM-004.

1. 500 metres radius around each wind turbine, offshore transformer module and / or their substructures and foundations comprising the Beatrice Offshore Wind Farm whilst work is being performed as indicated by the presence of construction vessels.
2. 50 metres radius around each wind turbine, offshore transformer module and / or their substructure and foundations installed but waiting to be commissioned as part of the Beatrice Offshore Wind Farm.

ALL VESSELS ARE REQUESTED to give all construction and support vessels a wide berth.

MARINERS ARE REMINDED to navigate with caution and keep continued watch on VHF Ch. 70 / 16 when navigating the area.

The Chart shown on page 19 below, shows the indicative transit routes and site entry gates for vessels entering the construction site from either the port of Wick (North) and Cromarty / Nigg (South) to avoid the highest density areas of static fishing gear.

#### **4. Safety Zone Monitoring**

Dedicated guard vessels have been utilised during all key construction activities on site, however now that the most vulnerable operations are complete, the guard duties covering the monitoring of Safety Zones, have been re-assigned to the Marine Coordination Centre (MCC) and other on-site vessels. The following conditions apply to ensure continuous monitoring during the remaining construction phase:

- Marine coordination undertaken in Wick from the established MCC, including 24-hour site monitoring via AIS and radar (both OTMs are fitted with AIS, X-band RADAR and marine VHF radios, including Digital Selective Calling (DSC));
- 500m safety zones around any structure where active construction work is ongoing (as denoted by the presence of a construction vessel);
- 50m safety zones around any finished structure up until the point of commissioning;
- All jackets have appropriate temporary or permanent lighting in operation;
- All jackets (both pre-and post-turbine installation) are marked with yellow paint as required;



# Weekly Notice of Operations (WNoO)

## Beatrice Offshore Windfarm Limited

### Construction Operations

---



Issue Date: 01<sup>st</sup> July 2019

LF000005-WNO-013: Weekly Notice of Operations - Rev 112

- The agreed cardinal marks and special marks remain in place and will continue to be in place until the NLB are satisfied that final operational lighting and marking has been commissioned;
- The cardinal marks are broadcasting via AIS;
- Continued compliance with the BOWL Navigational Safety Plan
- The wind farm is marked on the appropriately scaled Admiralty Chart
- Weekly notices of operations and notices to mariners will continue to be issued, and notices will be submitted via Kingfisher bulletins where appropriate.

#### 5. Fisheries Liaison

Fisheries liaison associated with the activity will be co-ordinated by Brown and May Marine. For any commercial fishery queries please contact:

Jen Miller Tel + 44 (0)1379 872144 Mobile +44 (0)7519 106002 [jen.miller@brownmay.com](mailto:jen.miller@brownmay.com)

All vessels are to be aware that there has been increased fishing activity close to the BOWL site and vessels may encounter static fishing gear whilst transiting to and from the site. Vessels sheltering to the South and West of the site should pay particular attention and keep a sharp lookout for such static fishing gear. Vessels are reminded that there are recommended transit routes to site, which should help avoid the areas of known fishing activity. (See chart Page 19)

#### 6. Distribution List

The distribution of this notice is as per email recipient's header. A central list of recipients is maintained by the Marine Coordinator. If you are not the appropriate recipient of these notices or do not wish to receive the notices in the future, please contact us at the address included in Section 1 of this notice.

#### 7. Website

The official website of Beatrice Offshore Windfarm Limited can be found at:

<https://www.beatricewind.com>

This contains all Notices to Mariners (NtM) published by BOWL and all Weekly Notices of Operations, together with a large amount of general information about the Project.

There is also a Twitter feed at <https://twitter.com/beatricewind>.

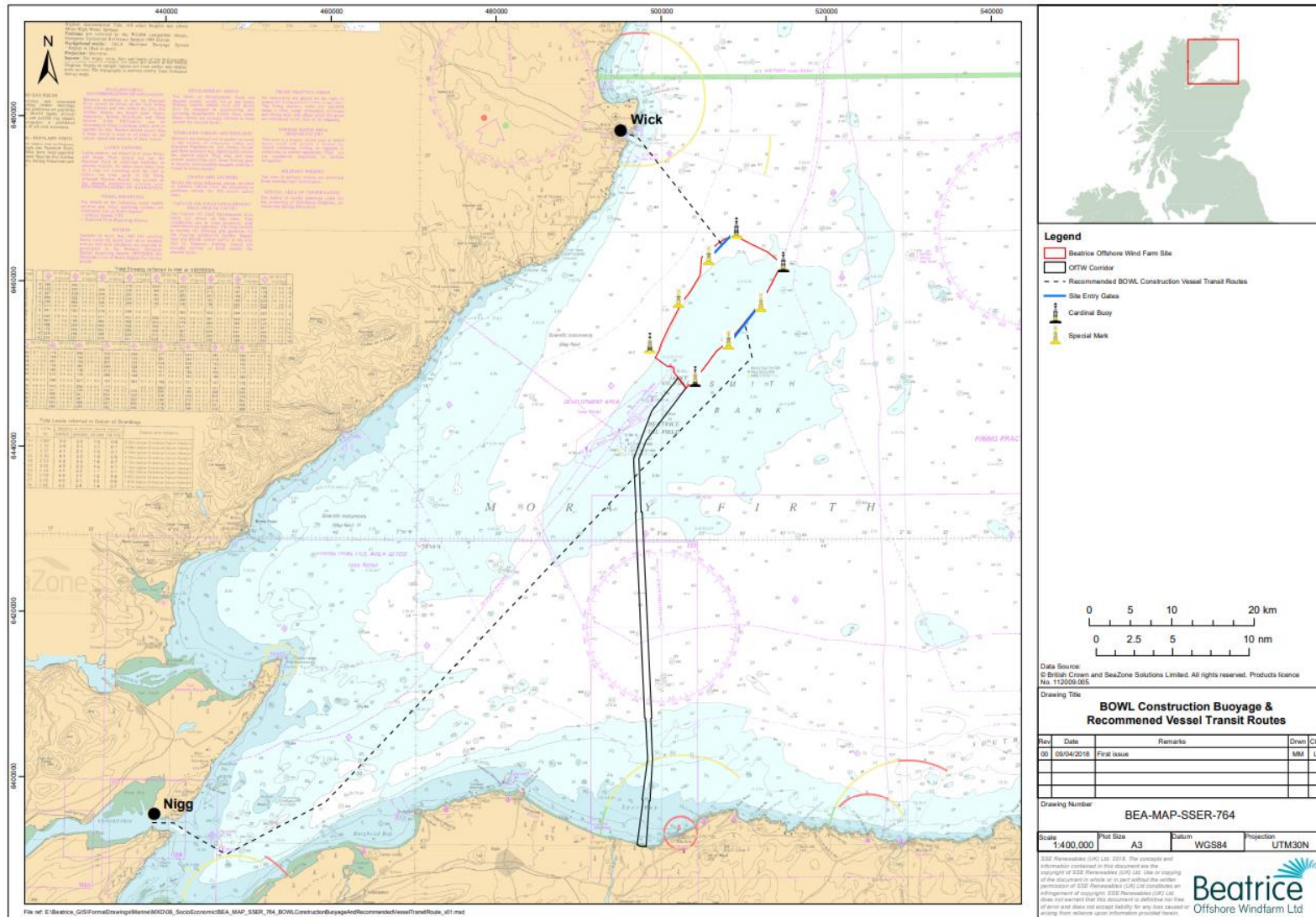
# Weekly Notice of Operations (WNoO)

## Beatrice Offshore Windfarm Limited

### Construction Operations



Issue Date: 01<sup>st</sup> July 2019  
 LF000005-WNO-013: Weekly Notice of Operations - Rev 112








# Weekly Notice of Operations (WNoO)

## Beatrice Offshore Windfarm Limited

### Construction Operations



Issue Date: 01<sup>st</sup> July 2019  
 LF000005-WNO-013: Weekly Notice of Operations - Rev 112

No	Vessel Picture	Vessel Name / Flag	Type / Function	Operator	Contact / contact details	Call sign / MMSI / IMO	LOA (m) Beam (m) Draft (m)	Date on Site	Marine Licence applicable
1		Seacat Intrepid	Crew Transfer Vessel / CTV	Seacat Services Ltd	Andrew Link Operations Manager, Seacat Services Ltd 2 Mariners Way, Cowes, Isle of Wight +44 (0)1983 475315 operations@seacatservices.co.uk	2HWU6 / 235107284	27 x 10 x 1.5m	25.09.2017	OWF & OFTW
2		Dalby Ribble	Crew Transfer Vessel / CTV	Seacat Services Ltd	John Davidson Siemens Transmission & Distribution Limited Princess Road Manchester M20 2UR, UK Tel.: +44 1614 466610 john.s.davidson@siemens.com	2IVX5 / 235113236	25.75 x 10.06m	01.07.2018	OWF / OFTW
3		CTV Seacat Mischief	Crew Transfer Vessel / CTV	Siemens Gamesa Renewable Energy (SGRE)	Barry Lucken Offshore Service Manager Beatrice Offshore Windfarm +44 7921 836268 barry.lucken@siemensgamesa.com	2IXU5 / 235113651	24 x 8m	15.08.2018	OWF
4		CTV Seacat Magic	Crew Transfer Vessel / CTV	Seacat Services Ltd	Andrew Link Operations Manager, Seacat Services Ltd 2 Mariners Way, Cowes, Isle of Wight +44 (0)1983 475315 operations@seacatservices.co.uk	2DJJ2 / 235114973	23 x 8 m	16.01.2019	OWF
5		CTV Seacat Volunteer	Crew Transfer Vessel / CTV	Seacat Services Ltd	Andrew Link Operations Manager, Seacat Services Ltd 2 Mariners Way, Cowes, Isle of Wight +44 (0)1983 475315 operations@seacatservices.co.uk	2HCP6 / 235102528	24 x 8 x 1.4m	21.03.2019	OWF






# Weekly Notice of Operations (WNoO)

## Beatrice Offshore Windfarm Limited

### Construction Operations



Issue Date: 01<sup>st</sup> July 2019  
 LF000005-WNO-013: Weekly Notice of Operations - Rev 112

No	Vessel Picture	Vessel Name / Flag	Type / Function	Operator	Contact / contact details	Call sign / MMSI / IMO	LOA (m) Beam (m) Draft (m)	Date on Site	Marine Licence applicable
6		Skandi Constuctor	Service Operations Vessel / SOV	DOF ASA Group	John Davidson Siemens Transmission & Distribution Limited Princess Road Manchester M20 2UR, UK Tel.: +44 1614 466610 <a href="mailto:john.s.davidson@siemens.com">john.s.davidson@siemens.com</a>	C6ZH8 / 311055900 / 9431642	120 x 25	21.03.2019	OFTW
7		Rix Cheetah	Crew Transfer Vessel / CTV	Seaway 7	Wick College Building 1st Floor, 1 The Shore, Wick Caithness Scotland Email. <a href="mailto:beatrice-mc@subsea7.com">beatrice-mc@subsea7.com</a> Rene Alferink Tel + 31 630 405584 Vincent Van Velzen Tel + 31 630 406174	2GGY7 / 235097312 IMO	25 x 7m	15.04.2019	OWF
8		Green Storm	Crew Transfer Vessel / CTV	Seaway 7	Wick College Building 1st Floor, 1 The Shore, Wick Caithness Scotland Email. <a href="mailto:beatrice-mc@subsea7.com">beatrice-mc@subsea7.com</a> Rene Alferink Tel + 31 630 405584 Vincent Van Velzen Tel + 31 630 406174	2EXU3 / 235089035 / 9638240	25 x 10 m	26.04.2019	OWF
9		Rix Lion	Crew Transfer Vessel / CTV	Seaway 7	Wick College Building 1st Floor, 1 The Shore, Wick Caithness Scotland Email. <a href="mailto:beatrice-mc@subsea7.com">beatrice-mc@subsea7.com</a> Rene Alferink Tel + 31 630 405584 Vincent Van Velzen Tel + 31 630 406174	2HOH3 / 235105282 IMO9745706	26 x 10 x 2.5m	06.05.2019	OWF
10		Rix Lynx	Crew Transfer Vessel / CTV	Seaway 7	Wick College Building 1st Floor, 1 The Shore, Wick Caithness Scotland Email. <a href="mailto:beatrice-mc@subsea7.com">beatrice-mc@subsea7.com</a> Rene Alferink Tel + 31 630 405584 Vincent Van Velzen Tel + 31 630 406174	2JGQ6 / 235115745 IMO9802358	26 x 7.0 x 2.0m	07.05.2019	OWF



# Weekly Notice of Operations (WNoO)

## Beatrice Offshore Windfarm Limited

### Construction Operations



Issue Date: 01<sup>st</sup> July 2019  
 LF000005-WNO-013: Weekly Notice of Operations - Rev 112

No	Vessel Picture	Vessel Name / Flag	Type / Function	Operator	Contact / contact details	Call sign / MMSI / IMO	LOA (m) Beam (m) Draft (m)	Date on Site	Marine Licence applicable
11		Dalby Aire	Crew Transfer Vessel / CTV	Seacat Services Ltd	Andrew Link Operations Manager, Seacat Services Ltd 2 Mariners Way, Cowes, Isle of Wight +44 (0)1983 475315 operations@seacatservices.co.uk	2GHE4 / 235097362	19 x 8 m	07.05.2019	OWF
12		Tenacity	Crew Transfer Vessel / CTV	Coastal Charters Ltd	Stephen J Beadsmoore Coastal Charters Ltd c/o SB Engineering Joseph Noble Road Lillighall Ind. Estate Workington Cumbria CA14 4JX Tel 01900 871471 email: coastalcharters@waveaccess.co.uk	2HPF8 / 235105502	24 x 4 m	13.05.2019	OWF