

Weekly Notice of Operations (WNoO)

Beatrice Offshore Windfarm Limited

Construction Operations



Issue Date: 29th January 2018
 LF000005-WNO-013: Weekly Notice of Operations - Rev 39

Notice of Operations at Beatrice Offshore Wind Farm

Work Planned for the Period 29.01.2018 to 05.02.2018

Construction of the Beatrice Offshore Wind Farm commenced on the 1st of April 2017. This notice will be updated weekly giving information on the progress and resources involved in the offshore project. The intention is to give an overview of activities and vessels involved. Should anyone have questions regarding the operations, we kindly ask you to put them forward well in advance.

Beatrice Offshore Windfarm Limited (BOWL) is developing the Beatrice Offshore Wind Farm in the 'Outer' Moray Firth on the north-western point of the Smith Bank, approximately 7 nm off the Caithness coastline. The development site will cover an approximate area of up to 130km² and will consist of 84 7MW offshore wind turbines (with a total capacity of 588MW) and two HVAC Offshore Transformer Modules (OTM). Water depths in the area range from approximately 38m below LAT in the south of the field to 60m below LAT in the north. The generated power will be transmitted to the grid via two subsea export / transmission cables with a landfall near Portgordon to the south of the field and grid connection at Blackhillock. The transmission cables will cover a route of approximately 38 nm from the wind farm boundary back to the landfall. The Beatrice Offshore Wind Farm development area is highlighted in red below, the OFTW cable corridor in black.

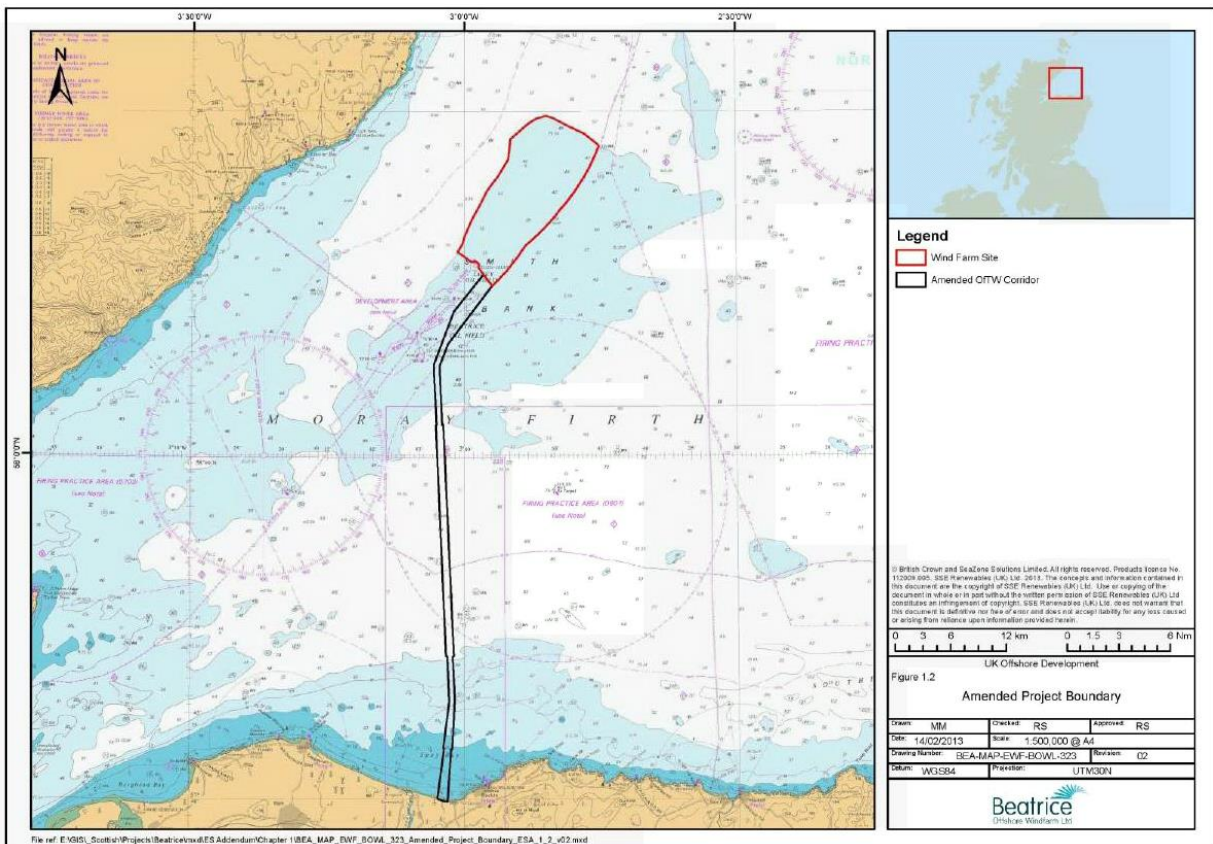


Fig. 1 Beatrice Offshore Wind Farm Location

Weekly Notice of Operations (WNoO)

Beatrice Offshore Windfarm Limited

Construction Operations



Issue Date: 29th January 2018
LF000005-WNO-013: Weekly Notice of Operations - Rev 39

1. Contact Details for Marine Coordination

The following contact can provide more information if required. Please note that specific queries can also be addressed to the relevant vessel or shore based representative.

Telephone Number	+44 (0) 3302 020329
Emergency Contact (24/7)	+44 (0) 7342 028207
Email for Marine Coordinator	mc.bowl@sse.com
Address	Unit 1 Harbour Office Wick Caithness KW1 5HA

2. Ongoing Operations

2.1 Beatrice Offshore Wind Farm Jacket Installation Campaign

Project:	Jacket Installation Campaign (See Notice to Mariners) NTM-032 Rev01
Contractor:	SHL
Contract Purpose:	To install WTG & OTM Jackets at completed piled locations within the construction site.
Area:	BOWL Construction Site: Jacket Locations (See Fig. 2 Table1)
Deployment Dates:	08 August 2017 – September 2018
Deployment Vessels:	HLV Oleg Strashnov, Stanislav Yudin, AHT Union Sovereign, AHT Smit Sentosa, Vos Prelude, Centaurus, Pegasus, Kamarina, & Smit Seraya.
Equipment:	HLV equipment, Pile cleaning equipment, Grouting equipment.

The Heavy Lift Vessel (HLV) Oleg Strashnov has returned to site and will re-mobilise to continue the jacket foundation installation campaign. The HLV Stanislav Yudin will remain on standby in Invergordon.

Weekly Notice of Operations (WNoO)

Beatrice Offshore Windfarm Limited
Construction Operations

Issue Date: 29th January 2018

LF000005-WNO-013: Weekly Notice of Operations - Rev 39

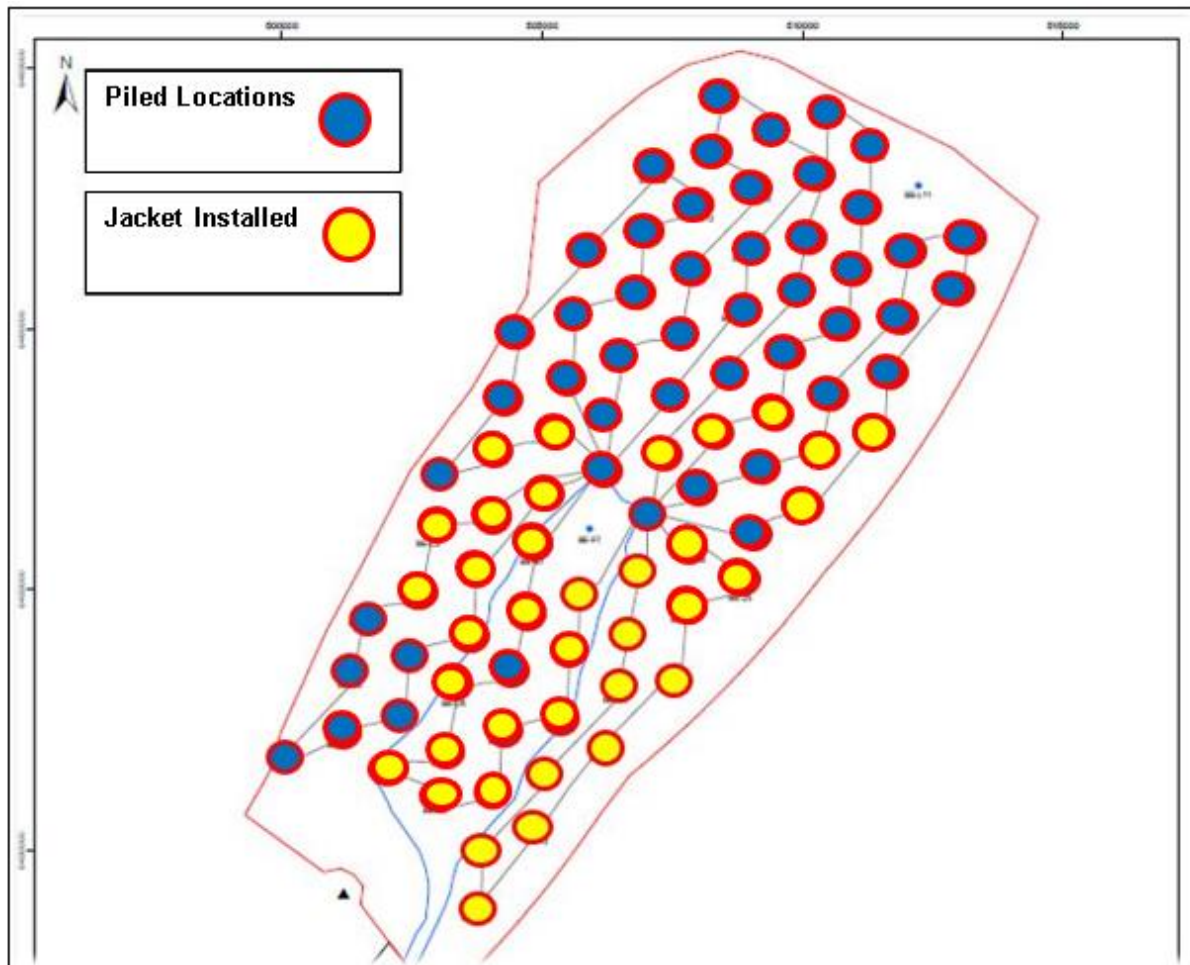


Fig. 2 Pile installation completed at 86 Locations

Foundation installation completed at 37 Locations

Table 1 - WTG and OTM Location Coordinates

Location ID	Latitude WGS84	Longitude WGS84	Piling Complete	Jacket installed
BE-A5	58° 12.471' N	002° 59.996' W	14.07.2017	
BE-B5	58° 12.687' N	002° 58.873' W	12.07.2017	
BE-B6	58° 13.308' N	002° 58.664' W	16.06.2017	
BE-B7	58° 13.929' N	002° 58.456' W	18.07.2017	
BE-C4	58° 12.307' N	002° 57.948' W	23.05.2017	13.12.2017
BE-C5	58° 12.902' N	002° 57.749' W	11.07.2017	
BE-C6	58° 13.524' N	002° 57.541' W	10.07.2017	
BE-C7	58° 14.144' N	002° 57.332' W	15.06.2017	01.09.2017
BE-C8	58° 14.766' N	002° 57.124' W	17.07.2017	20.01.2018
BE-C9	58° 15.386' N	002° 56.915' W	28.08.2017	
BE-D3	58° 11.995' N	002° 57.002' W	21.05.2017	12.12.2017

Weekly Notice of Operations (WNoO)

Beatrice Offshore Windfarm Limited

Construction Operations



Issue Date: 29th January 2018
 LF000005-WNO-013: Weekly Notice of Operations - Rev 39

Location ID	Latitude WGS84	Longitude WGS84	Piling Complete	Jacket installed
BE-D4	58° 12.497' N	002° 56.834' W	22.06.2017	14.12.2017
BE-D5	58° 13.117' N	002° 56.626' W	26.05.2017	21.01.2018
BE-D6	58° 13.739' N	002° 56.417' W	13.06.2017	31.08.2017
BE-D7	58° 14.359' N	002° 56.209' W	31.05.2017	18.01.2018
BE-D8	58° 14.981' N	002° 55.999' W	02.06.2017	20.12.2017
BE-D9	58° 15.602' N	002° 55.790' W	16.07.2017	21.09.2017
BE-D10	58° 16.223' N	002° 55.582' W	31.08.2017	
BE-D11	58° 16.844' N	002° 55.373' W	13.08.2017	
BE-E1	58° 10.900' N	002° 56.256' W	10.04.2017	01.09.2017
BE-E2	58° 11.470' N	002° 56.128' W	14.04.2017	16.08.2017
BE-E3	58° 12.090' N	002° 55.920' W	19.04.2017	02-12-2017
BE-E4	58° 12.712' N	002° 55.710' W	02.07.2017	20.09.2017
BE-E5	58° 13.333' N	002° 55.502' W	19.05.2017	
BE-E6	58° 13.954' N	002° 55.293' W	18.05.2017	24.08.2017
BE-E7	58° 14.575' N	002° 55.084' W	01.06.2017	25.08.2017
BE-E8	58° 15.196' N	002° 54.875' W	30.05.2017	18.12.2017
BE-E9	58° 15.817' N	002° 54.665' W	15.07.2017	21.09.2017
BE-E10	58° 16.438' N	002° 54.456' W	01.09.2017	
BE-E11	58° 17.059' N	002° 54.247' W	19.09.2017	
BE-E12	58° 17.680' N	002° 54.037' W	14.08.2017	
BE-F2	58° 11.685' N	002° 55.005' W	03.07.2017	06.09.2017
BE-F3	58° 12.306' N	002° 54.796' W	17.04.2017	07.09.2017
BE-F4	58° 12.927' N	002° 54.588' W	04.07.2017	19.09.2017
BE-F5	58° 13.548' N	002° 54.378' W	17.05.2017	14.09.2017
BE-F6	58° 14.168' N	002° 54.169' W	11.05.2017	11.09.2017
BE-F8 (OTM2)	58° 15.411' N	002° 53.750' W	08.04.2017	
BE-F9	58° 16.031' N	002° 53.540' W	22.09.2017	
BE-F10	58° 16.653' N	002° 53.330' W	20.09.2017	
BE-F11	58° 17.274' N	002° 53.120' W	07.09.2017	
BE-F12	58° 17.894' N	002° 52.911' W	05.07.2017	
BE-F13	58° 18.516' N	002° 52.701' W	10.09.2017	
BE-G3	58° 12.544' N	002° 53.726' W	28.05.2017	15.08.2017
BE-G4	58° 13.142' N	002° 53.464' W	17.06.2017	08.09.2017
BE-G5	58° 13.762' N	002° 53.254' W	10.05.2017	09.09.2017
BE-G6	58° 14.384' N	002° 53.044' W	06.05.2017	20.08.2017
BE-G7 (OTM1)	58° 15.004' N	002° 52.834' W	03.04.2017	
BE-G8	58° 15.625' N	002° 52.625' W	07.07.2017	10.09.2017
BE-G9	58° 16.247' N	002° 52.415' W	04.11.2017	
BE-G10	58° 16.867' N	002° 52.204' W	21.09.2017	
BE-G11	58° 17.488' N	002° 51.994' W	20.08.2017	
BE-G12	58° 18.109' N	002° 51.784' W	18.08.2017	
BE-G13	58° 18.730' N	002° 51.574' W	13.09.2017	
BE-G14	58° 19.351' N	002° 51.362' W	14.09.2017	
BE-H4	58° 13.356' N	002° 52.339' W	19.06.2017	13.08.2017
BE-H5	58° 13.977' N	002° 52.130' W	20.06.2017	27.08.2017

Weekly Notice of Operations (WNoO)

Beatrice Offshore Windfarm Limited

Construction Operations



Issue Date: 29th January 2018
 LF000005-WNO-013: Weekly Notice of Operations - Rev 39

Location ID	Latitude WGS84	Longitude WGS84	Piling Complete	Jacket installed
BE-H6	58° 14.598' N	002° 51.920' W	20.04.2017	21.08.2017
BE-H7	58° 15.219' N	002° 51.709' W	08.07.2017	
BE-H8	58° 15.840' N	002° 51.499' W	06.05.2017	13.09.2017
BE-H9	58° 16.461' N	002° 51.289' W	15.11.2017	
BE-H10	58° 17.082' N	002° 51.079' W	27.10.2017	
BE-H11	58° 17.703' N	002° 50.867' W	10.10.2017	
BE-H12	58° 18.324' N	002° 50.657' W	09.09.2017	
BE-H13	58° 18.944' N	002° 50.446' W	07.10.2017	
BE-J5	58° 14.192' N	002° 51.005' W	04.05.2017	26.08.2017
BE-J6	58° 14.812' N	002° 50.795' W	21.06.2017	
BE-J7	58° 15.433' N	002° 50.585' W	06.08.2017	
BE-J8	58° 16.055' N	002° 50.373' W	12.06.2017	22.12.2017
BE-J9	58° 16.675' N	002° 50.163' W	04.08.2017	
BE-J10	58° 17.296' N	002° 49.952' W	03.12.2017	
BE-J11	58° 17.917' N	002° 49.741' W	26.08.2017	
BE-J12	58° 18.538' N	002° 49.530' W	27.08.2017	
BE-J13	58° 19.159' N	002° 49.319' W	08.10.2017	
BE-K6	58° 15.027' N	002° 49.669' W	07.08.2017	24.12.2017
BE-K7	58° 15.648' N	002° 49.459' W	08.08.2017	30.12.2017
BE-K8	58° 16.269' N	002° 49.247' W	31.07.2017	
BE-K9	58° 16.890' N	002° 49.036' W	05.08.2017	
BE-K10	58° 17.510' N	002° 48.825' W	21.08.2017	
BE-K11	58° 18.131' N	002° 48.614' W	25.08.2017	
BE-K12	58° 18.752' N	002° 48.403' W	09.10.2017	
BE-L7	58° 15.862' N	002° 48.333' W	09.08.2017	01.01.2018
BE-L8	58° 16.482' N	002° 48.122' W	25.07.2017	
BE-L9	58° 17.104' N	002° 47.910' W	31.07.2017	
BE-L10	58° 17.724' N	002° 47.698' W	30.07.2017	
BE-M9	58° 17.317' N	002° 46.784' W	27.07.2017	
BE-M10	58° 17.938' N	002° 46.571' W	28.07.2017	

Weekly Notice of Operations (WNoO)

Beatrice Offshore Windfarm Limited

Construction Operations

Issue Date: 29th January 2018
 LF000005-WNO-013: Weekly Notice of Operations - Rev 39

2.2 Installation of Export Cable EC1.

Activity Description

CLV Nexans Skagerrak has completed trenching the second section of the export cable to the wet store loop at KP 67.7

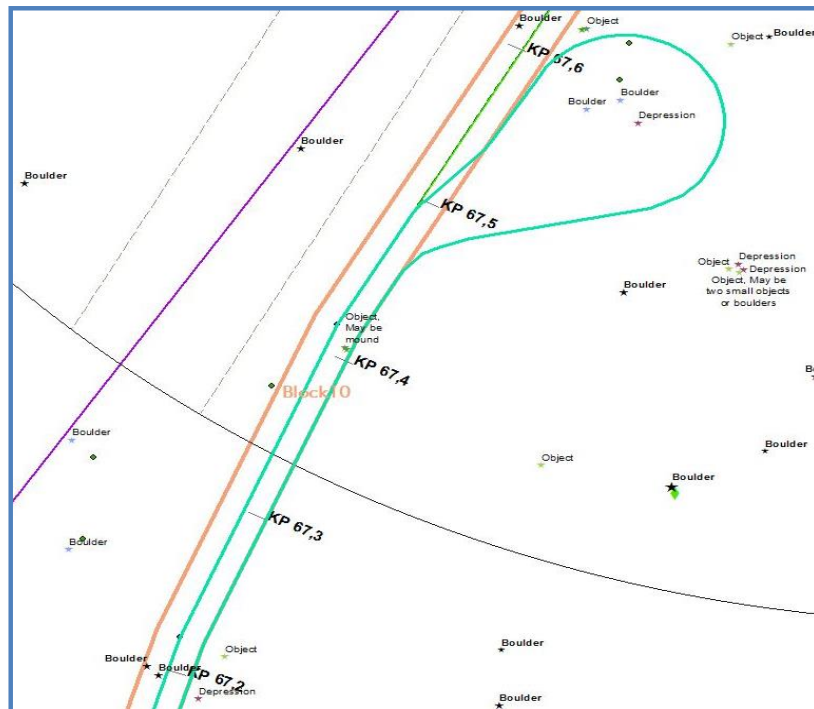


Fig. 3 Cable wet store location within the array area

Approximate location of cable wet store loop EC1.2	Latitude WGS84	Longitude WGS84
KP 67.7 on EC1	58° 14.806'N	002°53.028'W

2.3 Installation of Export Cable EC2.2

The installation of two export cables (EC) in the Beatrice Offshore Windfarm construction site will continue with installation of section EC2.2 from South of planned OTM2 and approx.37 km southwards. In this respect the work listed here is due to be carried out as described below starting around 30th January 2018.

Weekly Notice of Operations (WNoO)

Beatrice Offshore Windfarm Limited

Construction Operations

Issue Date: 29th January 2018
 LF000005-WNO-013: Weekly Notice of Operations - Rev 39

2.3.1 Area of Planned Activity

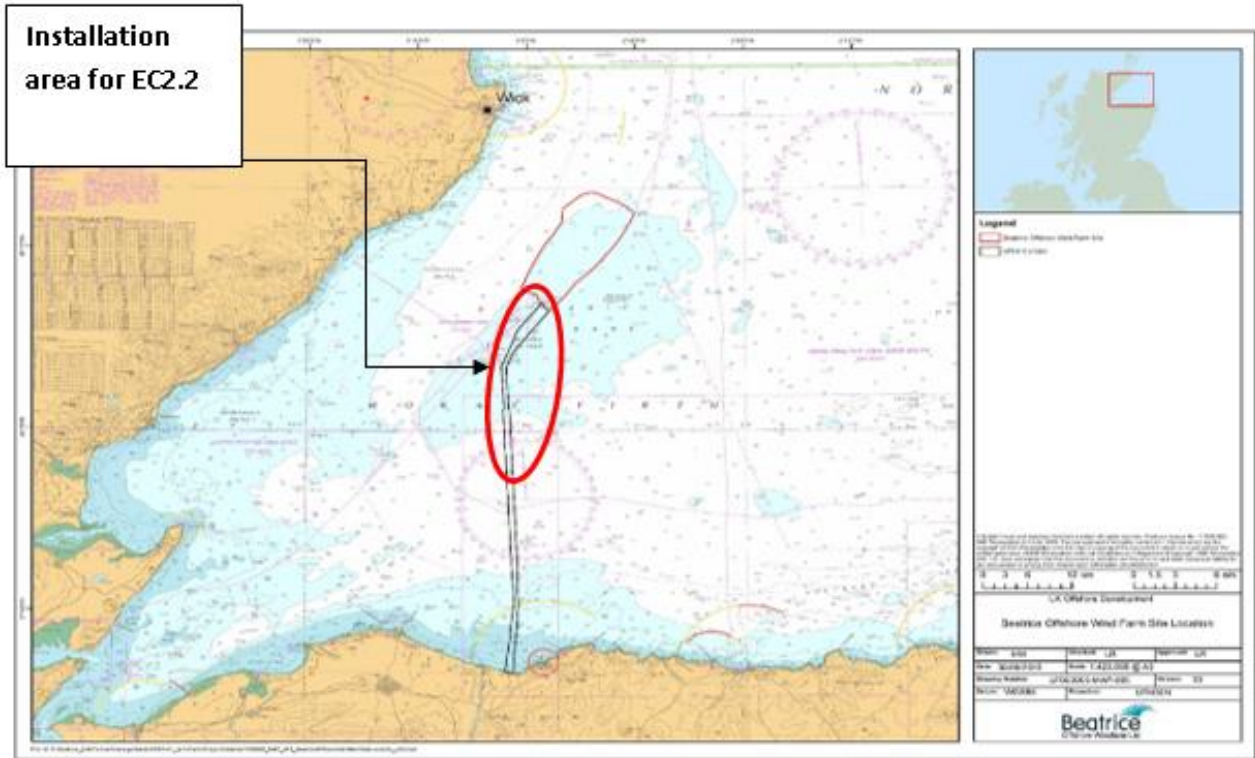


Fig.4 Cable installation location, approximately 33km – 67km from the Portgordon Beach

Approximate location of cable laydown ends EC2.2	Latitude WGS84	Longitude WGS84
KP 68 on EC2	58° 14.9062' N	2° 54.8284' W
KP 33 on EC2	57° 57.5978' N	3° 2.6611' W

2.3.2 Activity Description

On behalf of BOWL, Nexans Norway AS, using the cable laying vessel Skagerrak will install the section EC2.2 of an export cable. The work will commence as follows:

- Laying by the Skagerrak from KP68 to KP33

The cable will be temporary laid south of the planned OTM2 for later to be pulled in to through the OTM2 J-tube.

The cable end will be deployed south of the planned OTM2, and the cable will be laid northwards in a curve and then south following the planned cable route.

Weekly Notice of Operations (WNoO)

Beatrice Offshore Windfarm Limited

Construction Operations

Issue Date: 29th January 2018
 LF000005-WNO-013: Weekly Notice of Operations - Rev 39

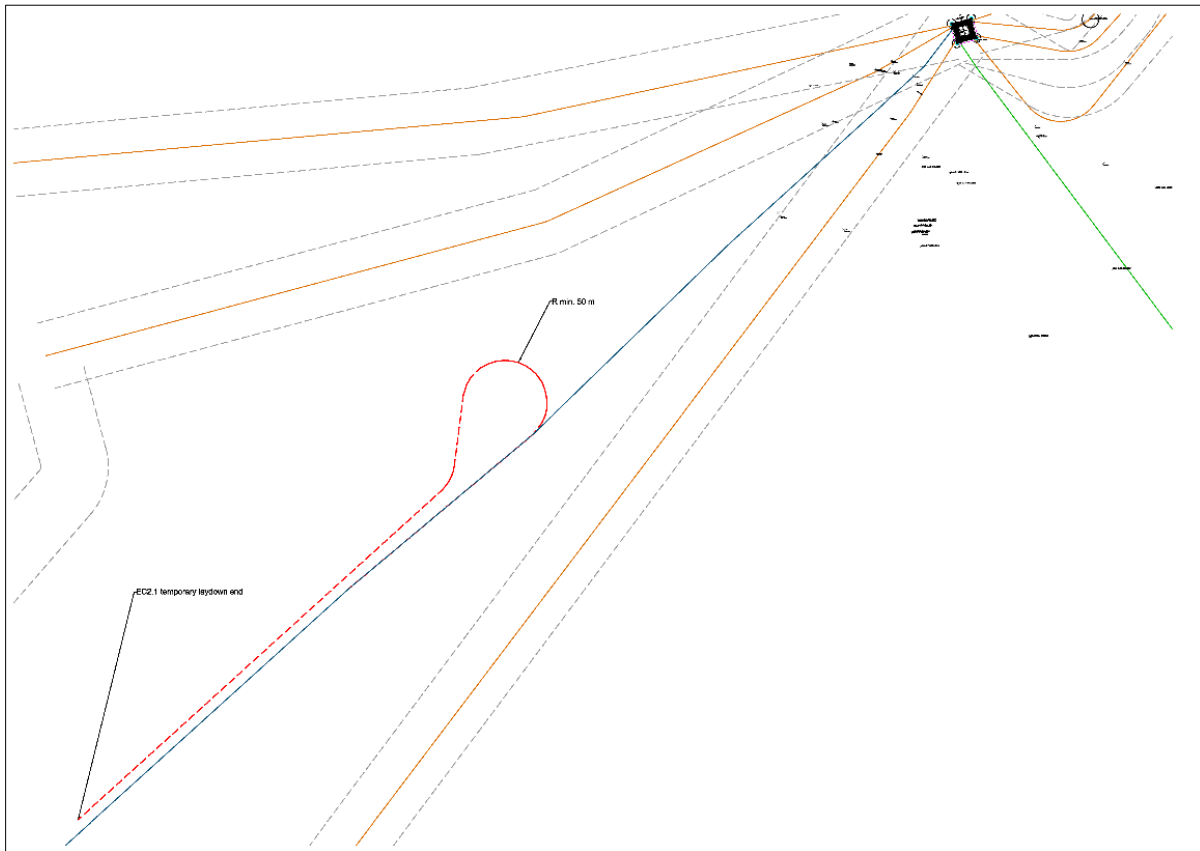


Fig.5 EC2.2 start laying south of OTM2, showing location of cable loop

The second cable end will be laid down on seabed approx. 37 km south of the OTM2

2.3.3 Vessels Associated with the Activity

The vessels that are involved with the described operation are the CLV Skagerrak and the guard vessels MV "Seagull" BF74 and MV "Shemarah II" LH65.

Skagerrak	
General Description and Dimensions:	Cable Layer & Trenching L:99.75m / B:35.41m
Call Sign:	LCEK
MMSI:	257253000
Onshore Representative:	Øyvind Haug BEATRICE Installation Engineering Manager Mob: +47 916 27 674 Office: +47 22 88 65 09

Weekly Notice of Operations (WNoO)

Beatrice Offshore Windfarm Limited

Construction Operations

Issue Date: 29th January 2018
LF000005-WNO-013: Weekly Notice of Operations - Rev 39



2.3.4 Adverse Weather Conditions

Should adverse weather occur during the trenching, the Skagerrak will cease operation and hold position until suitable working weather returns. The vessel is able to recover the Capjet within around 30 mins and move off station if required.

The operational limits for the trenching are listed in below table:

	Laying
Max Wind Force	15 m/s ¹⁾
Max Wave Height, Hs	3 m ²⁾
Max Surface Current	1.3 m/s
Max Bottom Current	1.3 m/s
Min Surface Visibility	100 m
Min ROV Visibility	2 m

Weekly Notice of Operations (WNoO)

Beatrice Offshore Windfarm Limited

Construction Operations

Issue Date: 29th January 2018
 LF000005-WNO-013: Weekly Notice of Operations - Rev 39

2.4 Sub-sea marker buoys on the exit pipe of EC2 at Portgordon

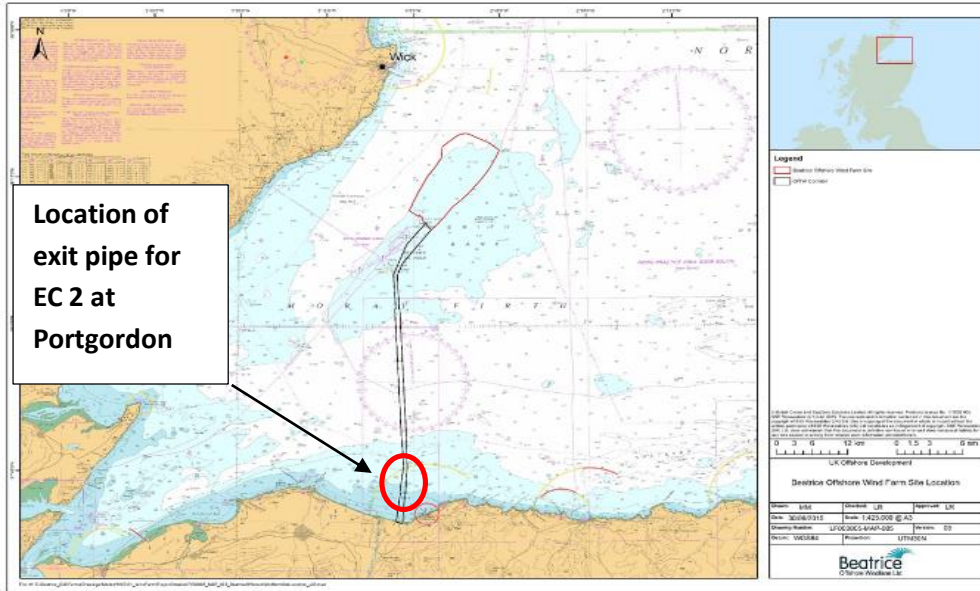


Fig. 5 Location of exit pipe for EC 2 at Portgordon

Exit pipe marker buoy Location	Latitude WGS84	Longitude WGS84
EC2 pipe exit	57°40.143'N	003° 02.655'W

2.4.1 Activity Description

Diving works have been completed at EC2. At the exit point, approximately 450m offshore, the sealed pipe end has been marked with sub-sea marker buoys to assist divers locate the exit point when EC2.1 is being prepared for pull in. The marker buoy rig consists of a 10mm steel wire, 30m long, with both ends attached to the pipe flange with shackles. The remaining slack (loop) will be stretched out along the pipe route and is fitted with two 6inch trawler buoys. Both will be sub-sea and have a maximum height of 0,5m over seabed.

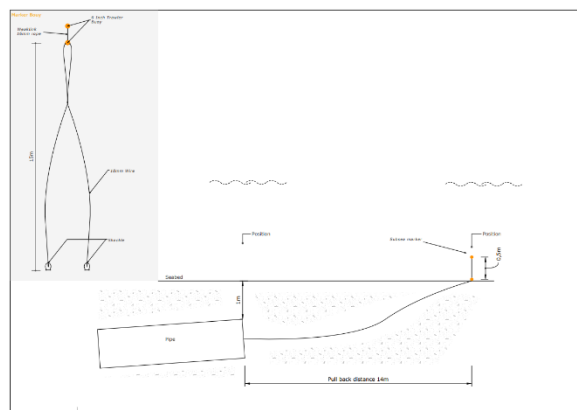


Fig. 6 EC2 direct pipe end marker buoy rig

Weekly Notice of Operations (WNoO)

Beatrice Offshore Windfarm Limited

Construction Operations

Issue Date: 29th January 2018
 LF000005-WNO-013: Weekly Notice of Operations - Rev 39

2.5 Inter Array Cable Pre Lay Grapnel Run (PLGR) & Inter Array Cable Installation.

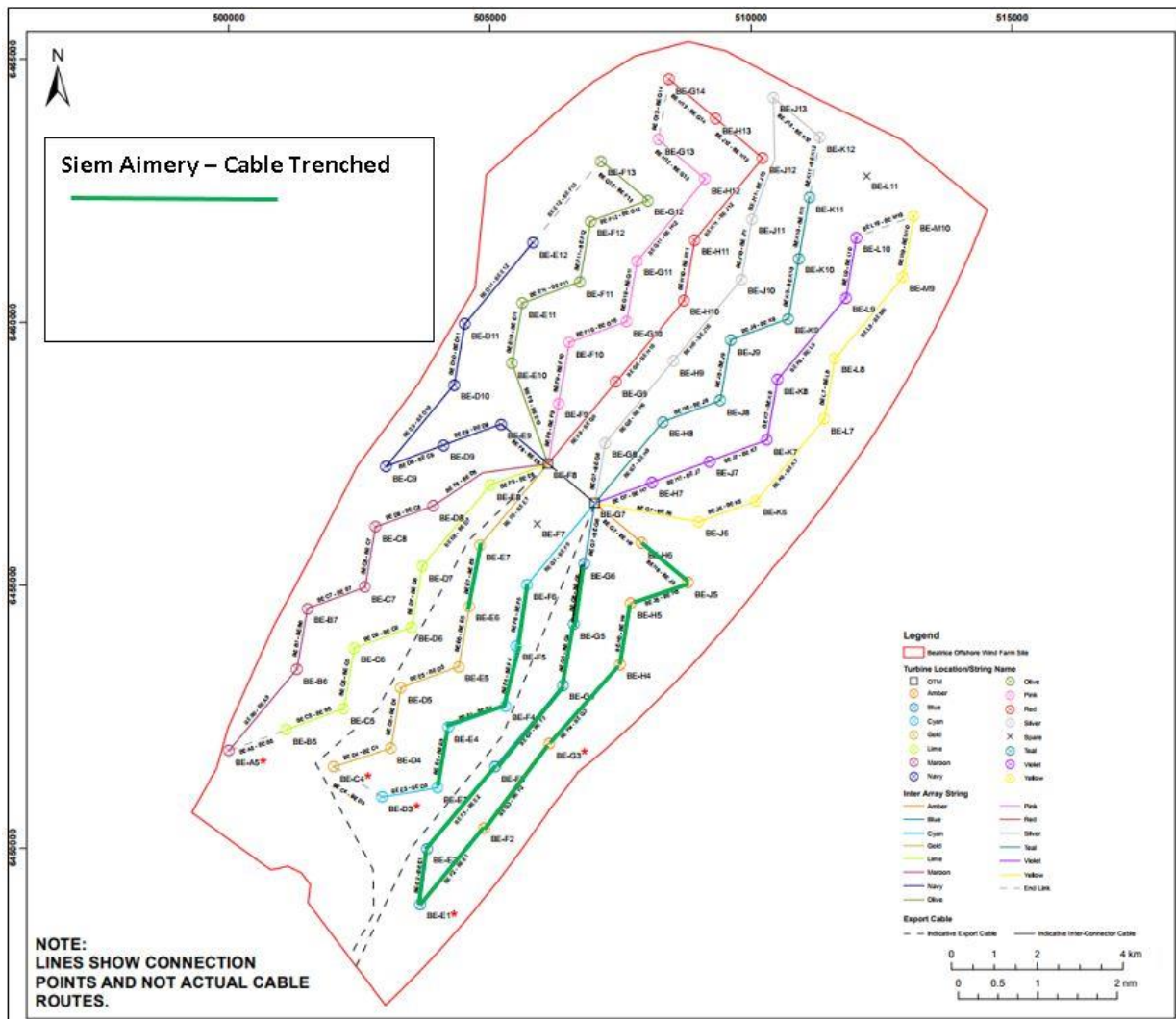


Fig. 7 Cable installation Progress

Siem Stingray and Siem Aimery have completed works as shown in Table 2. The inter array cable vessels will return approximately 01st March 2018

It should be noted at this stage that not all cables have been trenched to the required depth and as such are potentially at risk from any fishing or anchoring activities.

2.6 Scientific Equipment Removal & Service and Re-installation

Mariners are advised that, further to notice UoA/09/2017 and in conjunction with Beatrice Offshore Windfarm Limited (BOWL), the University of Aberdeen intends to **remove** scientific

Weekly Notice of Operations (WNoO)

Beatrice Offshore Windfarm Limited Construction Operations



Issue Date: 29th January 2018

LF000005-WNO-013: Weekly Notice of Operations - Rev 39

equipment moorings in the Moray Firth at the locations listed in Table 1 below (see chart extracts at the foot of this notice)

Name	As laid coordinates (WGS84 datum)		Characteristics
40	57° 48.988' N	3° 36.379' W	Subsurface with acoustic release.
41	57° 51.141' N	3° 33.018' W	Subsurface with acoustic release.
47	58° 00.817' N	3° 08.549' W	Subsurface.
48	58° 04.009' N	3° 06.916' W	Subsurface.
49	58° 04.450' N	3° 00.999' W	Subsurface.
54	58° 13.520' N	2° 41.961' W	Subsurface.
56	58° 18.724' N	2° 37.062' W	Subsurface.
64	57° 42.521' N	3° 30.174' W	Surface marked (dhan, 12' aluminium & RADAR reflector)
66	57° 43.082' N	3° 14.977' W	Surface marked (dhan, 12' aluminium & RADAR reflector)
67	57° 42.069' N	3° 10.026' W	Surface marked (dhan, 12' aluminium & RADAR reflector)
108	58° 18.993' N	2° 59.223' W	Subsurface.
110	58° 07.668' N	2° 45.374' W	Subsurface.
146	58° 15.224' N	2° 53.322' W	Subsurface with transponder.
149	58° 16.151' N	2° 51.899' W	Subsurface with transponder.
150	58° 16.755' N	2° 50.970' W	Subsurface with transponder.
159	58° 09.260' N	2° 52.234' W	Subsurface.
163	58° 17.966' N	2° 44.992' W	Subsurface.
165	58° 12.478' N	3° 01.251' W	Subsurface.
175	58° 18.725' N	2° 46.841' W	Subsurface.
178	58° 17.987' N	2° 49.250' W	Subsurface.
179	58° 17.981' N	2° 50.020' W	Subsurface.
180	58° 18.482' N	2° 52.002' W	Subsurface with transponder.
181	58° 19.065' N	2° 51.260' W	Subsurface with transponder.
182	58° 15.000' N	2° 55.733' W	Subsurface with transponder.
183	58° 20.235' N	2° 50.708' W	Subsurface.
184	58° 15.422' N	2° 47.713' W	Subsurface.
185	58° 11.356' N	2° 59.450' W	Subsurface with transponder.
191	58° 16.536' N	2° 46.446' W	Subsurface.
196	58° 14.097' N	2° 54.656' W	Subsurface with transponder.
197	58° 12.063' N	2° 57.544' W	Subsurface with transponder.
201	58° 19.109' N	2° 51.632' W	Subsurface
202	58° 19.136' N	2° 51.652' W	Subsurface
203	58° 19.163' N	2° 51.677' W	Subsurface
204	58° 19.184' N	2° 51.691' W	Subsurface

Weekly Notice of Operations (WNoO)

Beatrice Offshore Windfarm Limited

Construction Operations



Issue Date: 29th January 2018
 LF000005-WNO-013: Weekly Notice of Operations - Rev 39

Mariners are advised that the below scientific equipment moorings were **removed** on the 3rd of January 2018.

Name	As laid coordinates (WGS84 datum)		Characteristics
44	57° 56.261' N	3° 21.438' W	Subsurface with acoustic release.
82	58° 00.625' N	3° 25.691' W	Subsurface with acoustic release.
90	58° 01.064' N	3° 36.596' W	Subsurface with acoustic release.
99	57° 50.854' N	3° 24.453' W	Subsurface with acoustic release.
186	57° 50.695' N	3° 39.256' W	Subsurface with acoustic release.
187	57° 56.050' N	3° 45.720' W	Subsurface with acoustic release.
188	57° 55.919' N	3° 53.286' W	Subsurface with acoustic release.
189	57° 59.405' N	3° 48.781' W	Subsurface with acoustic release.
190	58° 07.723' N	3° 07.467' W	Subsurface.
192	58° 12.183' N	3° 26.160' W	Subsurface with acoustic release.
193	58° 07.198' N	3° 34.320' W	Subsurface with acoustic release.
194	57° 57.660' N	3° 57.358' W	Subsurface with acoustic release.

Mariners are advised that the below scientific equipment mooring was **removed** on the 4th of January 2018.

Name	As laid coordinates (WGS84 datum)		Characteristics
65	57° 43.485' N	3° 25.174' W	Surface marked (dhan, 12' aluminium & RADAR reflector)

Mariners are advised that the below scientific equipment mooring was **removed** on the 11th of January 2018.

Name	As laid coordinates (WGS84 datum)		Characteristics
46	58° 00.861' N	3° 15.407' W	Subsurface with acoustic release.
98	57° 54.168' N	3° 17.857' W	Subsurface.
195	57° 54.741' N	3° 31.761' W	Subsurface with acoustic release.

Mariners should also note that the following existing moorings (table 2) in the Moray Firth will be **serviced and reinstalled in their current locations** (see also chart extracts at the foot of this notice).

Name	As laid coordinates (WGS84 datum)		Characteristics
------	--------------------------------------	--	-----------------

Weekly Notice of Operations (WNoO)

Beatrice Offshore Windfarm Limited

Construction Operations



Issue Date: 29th January 2018

LF000005-WNO-013: Weekly Notice of Operations - Rev 39

1	57° 41.413' N	3° 58.953' W	Subsurface
2	57° 35.133' N	4° 05.891' W	Surface marked (NB50 buoy, red)
3	57° 44.073' N	3° 19.776' W	Surface marked (dhan, 12' aluminium & RADAR reflector)
4	57° 41.357' N	3° 05.547' W	Surface marked (NB50 buoy, red)
17	57° 57.759' N	3° 31.260' W	Subsurface with acoustic release.
42	57° 52.337' N	3° 29.058' W	Subsurface with acoustic release.
45	57° 57.261' N	3° 16.084' W	Subsurface with acoustic release.
89	57° 56.056' N	3° 38.252' W	Subsurface with acoustic release.
160	58° 17.648' N	2° 49.931' W	Subsurface with transponder.
161	58° 12.933' N	2° 55.954' W	Subsurface with transponder.
162	58° 18.176' N	2° 54.124' W	Subsurface with transponder.
164	58° 12.830' N	2° 51.669' W	Subsurface with transponder.

The moorings support sound recording equipment and acoustic loggers that record echolocation clicks of dolphins and porpoises (see images at the foot of this notice)
 All works will be carried out by Moray First Marine Ltd, using the vessel Coral Wind or the vessel Waterfall. Works will commence as soon as possible, subject to weather.

Coral Wind	
General Description and Dimensions:	Workboat, UK MCA Cat.2, 60nm from safe haven LOA 14m, Beam 5.1m, Draft 1.2m
Call sign:	2EMX8
MMSI:	235086491
On Board Contact:	Bill Ruck, 07775 802963
E-mail:	bill@moraymarine.com



Weekly Notice of Operations (WNoO)

Beatrice Offshore Windfarm Limited

Construction Operations

Issue Date: 29th January 2018
 LF000005-WNO-013: Weekly Notice of Operations - Rev 39

Waterfall	
General Description and Dimensions:	Workboat, UK MCA Cat.2, 60nm from safe haven LOA 15m, Beam 6m.
Call sign:	2CBT4
MMSI:	235071392
On Board Contact:	Bill Ruck, 07775 802963
E-mail:	bill@moraymarine.com
	

A further Notice to Mariners will be issued when the moorings are permanently discontinued.

For information and enquiries please contact:

Tim Candido Barton,
 Lighthouse Field Station, University of Aberdeen, George St., Cromarty, Ross-shire, IV11 8YL.
 +44 (0)1381 600548.
t.r.barton@abdn.ac.uk



Fig. 9 Examples of equipment which the above moorings support

Weekly Notice of Operations (WNoO)

Beatrice Offshore Windfarm Limited

Construction Operations

Issue Date: 29th January 2018
LF000005-WNO-013: Weekly Notice of Operations - Rev 39

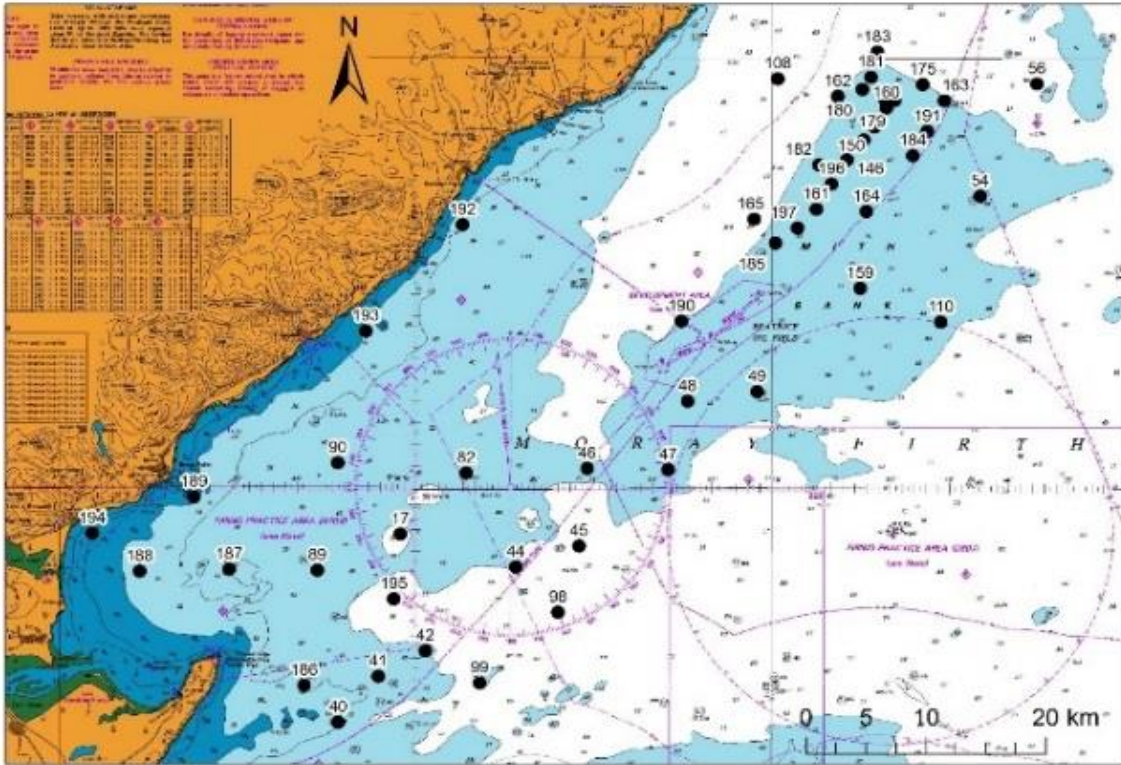


Fig. 10 Mooring locations Moray Firth, excluding sites along the southern shore

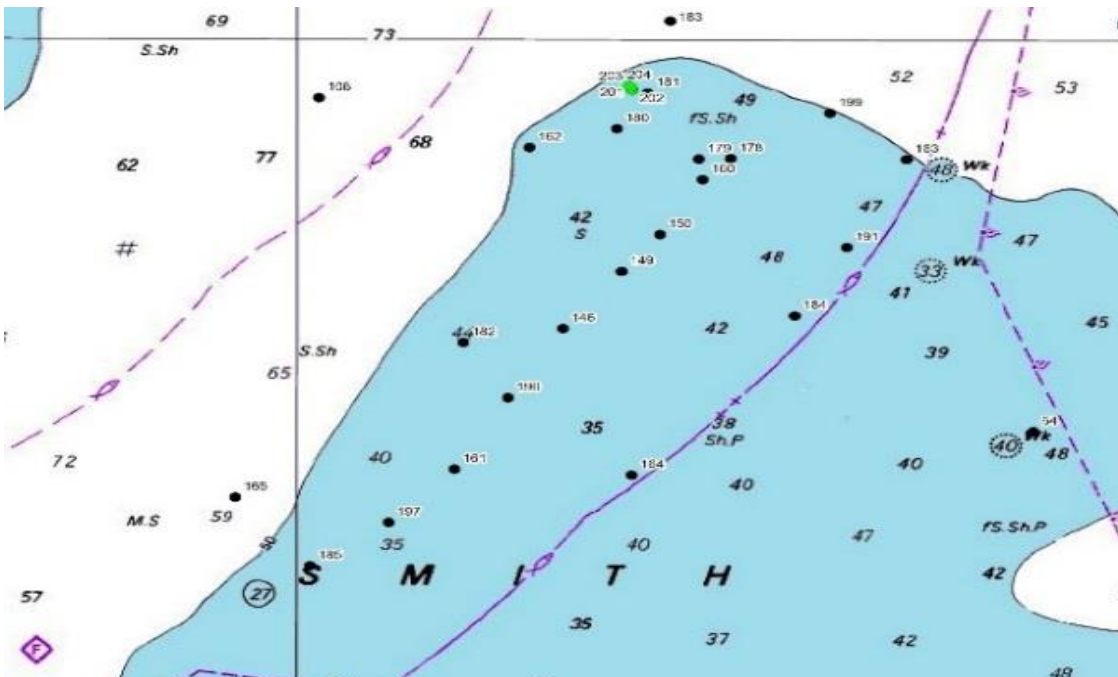


Fig. 11 - Mooring locations; Detail of Smith Bank sites, showing new locations in green

Weekly Notice of Operations (WNoO)

Beatrice Offshore Windfarm Limited

Construction Operations

Issue Date: 29th January 2018

LF000005-WNO-013: Weekly Notice of Operations - Rev 39

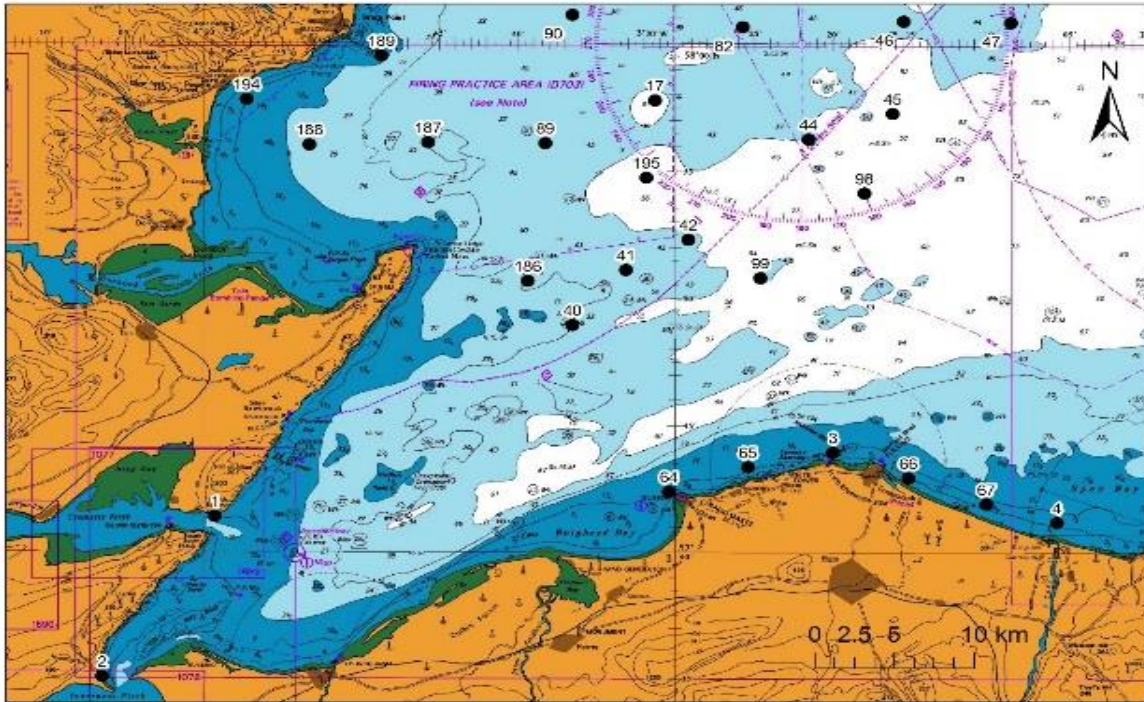


Fig. 12 - Mooring locations; Detail of South side of Moray Firth sites

3. Completed Operations

3.1 Piling operations

The placement of four pin piles at both OTM locations and 84 WTG foundation locations was successfully completed on the 3rd of December 2017.

4. General Safety Advice

All vessels engaged in the activity will exhibit appropriate lights and shapes prescribed by the International Regulations for Preventing Collisions at Sea; relative to their operations. All vessels engaged in the activity will also transmit an Automatic Identification System (AIS) message.

The Secretary of State has authorised the use of the following safety zones as per Notice to Mariners LF000005-NTM-004.

1. 500 metres radius around each wind turbine, offshore transformer module and / or their substructures and foundations comprising the Beatrice Offshore Wind Farm whilst work is being performed as indicated by the presence of construction vessels.

Weekly Notice of Operations (WNoO)

Beatrice Offshore Windfarm Limited

Construction Operations



Issue Date: 29th January 2018

LF000005-WNO-013: Weekly Notice of Operations - Rev 39

2. 50 metres radius around each wind turbine, offshore transformer module and / or their substructure and foundations installed but waiting to be commissioned as part of the Beatrice Offshore Wind Farm.

ALL VESSELS ARE REQUESTED to give all construction and support vessels a wide berth.

MARINERS ARE REMINDED to navigate with caution and keep continued watch on VHF Ch. 70 / 16 when navigating the area.

5. Guard Vessel Deployment

Guard vessels currently on the main construction site are Seagull and Shemarah II. Both vessels can be contacted on VHF Ch.16

Project:	Beatrice Offshore Windfarm Guard Vessel Deployment.
Contractor:	SHL & Nexans – SFF Services Ltd.
Contract Purpose:	Guard Vessel for the Windfarm site.
Area:	BOWL construction site: within the array cable routes and foundation locations. (See Fig 1 for details)
Deployment Dates:	1 st April 2017 – TBC.
Deployment Vessel (s):	Various on a continuous 21 day rotation.
Equipment:	N/A

On behalf of BOWL, Seaway Heavy Lifting has contracted the Scottish Fishermen's Federation (SFF) to provide guard vessels during the piling and foundation installation campaigns. Nexans Norway AS have contracted the SFF to provide guard vessels during the export cable installation campaign. These vessels will change regularly.

The guard vessel's primary duty is security of the construction site by informing and warning non-construction vessels of the ongoing activities and associated Safety Zones

6. Fisheries Liaison

Fisheries liaison associated with the activity will be co-ordinated by Brown and May Marine. For any commercial fishery queries please contact: Alex Winrow-Giffin, telephone: +44 (0)1379 872144 and mobile: +44 (0)7760 160039. alex@brownmay.com

7. Distribution List

The distribution of this notice is as per email recipient's header. A central list of recipients is maintained by the Marine Coordinator. If you are not the appropriate recipient of these notices, or do not wish to receive the notices in the future, please contact us at the address included in Section 1 of this notice.

Weekly Notice of Operations (WNoO)

Beatrice Offshore Windfarm Limited

Construction Operations



Issue Date: 29th January 2018

LF000005-WNO-013: Weekly Notice of Operations - Rev 39

8. Website

The official website of Beatrice Offshore Windfarm Limited can be found at:

<https://www.beatricewind.com>

This contains all Notices to Mariners (NtM) published by BOWL and all Weekly Notices of Operations, together with a large amount of general information about the Project.

There is also a Twitter feed at <https://twitter.com/beatricewind>.

Weekly Notice of Operations (WNoO)

Beatrice Offshore Windfarm Limited

Construction Operations



Issue Date: 29th January 2018
 LF000005-WNO-013: Weekly Notice of Operations - Rev 39

Beatrice Offshore Windfarm Vessels & Operators									
Reference to Marine Licence Conditions 2.5, 2.6 and 3.1.2		Vessel Data Matrix OWF							
No Ref	Vessel Picture	Vessel Name / Flag	Type / Function	Operator	Contact / contact details	Call sign / MMSI / IMO	LOA (m) Beam (m) Draft (m)	Date on Site	Marine Licence applicable
1		Stanislav Yudin	Heavy Lift Vessel	Seaway Heavy Lifting (SHL)	Danny Sprangers (SHL) C/o Subsea 7 East Campus Arnhall Business Park Westhill, Aberdeenshire AB32 6FE +31 653997158 EMAIL:dsprangers@shl.nl	5BYM2 / 210334000 IMO8219463	183.3 x 40 x 8.9m	00.01.2018	OWF & OTW
2		Oleg Strashnov	Heavy Lift Vessel / HLV	Seaway Heavy Lifting (SHL)	C/o Subsea 7 East Campus Prospect Road Arnhall Business Park Westhill, Aberdeenshire AB32 6FE +31 653997158 EMAIL:dsprangers@shl.nl	5BNL2 / 212905000	183.3 / 47 / 13.5	15.01.2018	OWF & OTW
3		Smit Sentosa	Anchor Handling Tug	Seaway Heavy Lifting (SHL)	Danny Sprangers (SHL) C/o Subsea 7 East Campus Arnhall Business Park Westhill, Aberdeenshire AB32 6FE +31 653997158 EMAIL:dsprangers@shl.nl	ORRX / 205696000 IMO9662356	51.8 x 15.0 x 6.2m	01.01.2018	OWF & OTW
5		Smit Seraya	Barge Tow Vessel	Seaway Heavy Lifting (SHL)	Danny Sprangers (SHL) C/o Subsea 7 East Campus Arnhall Business Park Westhill, Aberdeenshire AB32 6FE +31 653997158 EMAIL:dsprangers@shl.nl	9V9845 / 566804000 IMO9662368	51.8 x 16 x 6m	01.01.2018	OWF
6		Vos Prelude	Supply Vessel	Seaway Heavy Lifting (SHL)	Danny Sprangers (SHL) C/o Subsea 7 East Campus Arnhall Business Park Westhill, Aberdeenshire AB32 6FE +31 653997158 EMAIL:dsprangers@shl.nl	PBZK / 245969000 IMO9444340	73 x 20m	16.11.2017	OWF & OTW
		Island Crown	Walk to work OTM commissioning	Stålhaugen 12, 6065 Ulsteinvik, Norway +47 70400000	Project Manager Arnt Petter Osnes T +47 70400025 +47 46829930 arnt@islandoffshore.com	M LAC08/9630535 IMO257245000	96 x 20 m	01.02.2017	OWF









Weekly Notice of Operations (WNoO)

Beatrice Offshore Windfarm Limited

Construction Operations



Issue Date: 29th January 2018
 LF000005-WNO-013: Weekly Notice of Operations - Rev 39

19		Skagerrak	Export Cable laying Vessel	Nexans Norway AS Innspurten 9, 0663 Oslo, Norway +47 22 88 61 00	Øyvind Haug BEATRICE Installation Engineering Manager Mob: +47 916 27 674 Office: +47 22 88 65 09	LCEK / 25723000	99.75m x 35.41m	09.11.2017	OWF / OTW
7		Rix Lynx	Crew Transfer Vessel / CTV	Seaway Heavy Lifting (SHL)	Danny Sprangers (SHL) C/O Subsea 7 East Campus Arnhall Business Park Westhill, Aberdeenshire AB32 6FE +31 653997158 EMAIL: dsprangers@shl.nl	2JGQ6 / 235115745 IMO9802358	26 x 7.0 x 2.0m	27.03.2017	OWF
8		Centaurus	Barge Tow Vessel	Seaway Heavy Lifting (SHL)	Danny Sprangers (SHL) C/O Subsea 7 East Campus Arnhall Business Park Westhill, Aberdeenshire, AB32 6FE +31 653997158 Email - dsprangers@shl.nl	V2ED3 / 305820000 IMO9433755	48.81 x 14.06m	08.08.2017	OWF
9		Pegasus	Barge Tow Vessel	Seaway Heavy Lifting (SHL)	Danny Sprangers (SHL) C/O Subsea 7 East Campus Arnhall Business Park Westhill, Aberdeenshire, AB32 6FE +31 653997158 Email - dsprangers@shl.nl	V2ED2 / 305389000 IMO9433743	48.81 x 14.06m	08.08.2017	OWF
10		Kamarina	Barge Tow Vessel	Seaway Heavy Lifting (SHL)	Danny Sprangers (SHL) C/O Subsea 7 East Campus Arnhall Business Park Westhill, Aberdeenshire, AB32 6FE +31 653997158 Email - dsprangers@shl.nl	IITW2 / 247278400 IMO9499644	50 x 15m	08.08.2017	OWF
11		Union Sovereign	Anchor Handling Tug	Seaway Heavy Lifting (SHL)	Danny Sprangers (SHL) C/O Subsea 7 East Campus Arnhall Business Park Westhill, Aberdeenshire, AB32 6FE +31 653997158 Email - dsprangers@shl.nl	ORQW / 205644000 IMO9262742	67.4 x 15.5m	21.08.2017	OWF / OTW
12		Artemis INS564	Guard Vessel	Seaway Heavy Lifting (SHL)	Danny Sprangers (SHL) C/O Subsea 7 East Campus Arnhall Business Park Westhill, Aberdeenshire, AB32 6FE +31 653997158 Email - dsprangers@shl.nl	MVIX5 / 233975000	28 x 8m	12.12.2017	OWF
13		Morning Dawn PD359	Guard Vessel	Scottish Fishermens Federation (SFF) for Seaway Heavy Lifting (SHL)	Danny Sprangers (SHL) C/O Subsea 7 East Campus Arnhall Business Park Westhill, Aberdeenshire, AB32 6FE +31 653997158 Email - dsprangers@shl.nl	MHEU3 / 232253000	45 x 9 m	21.11.2017	OWF & OTW

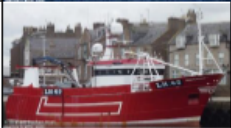




Weekly Notice of Operations (WNoO)

Beatrice Offshore Windfarm Limited

Construction Operations



Issue Date: 29th January 2018
 LF000005-WNO-013: Weekly Notice of Operations - Rev 39

14		Shemarah II LH65	Guard Vessel	Scottish Fishermens Federation (SFF) for Seaway Heavy Lifting (SHL)	Danny Sprangers (SHL) C/O Subsea 7 East Campus Arnhall Business Park Westhill, Aberdeenshire, AB32 6FE +31 653997158 Email - dsprangers@shl.nl	MVRR7 / 232007650	27 x 8m	09.01.2018	OWF
15		Seagull BF74	Guard Vessel	Scottish Fishermens Federation (SFF) for Seaway Heavy Lifting (SHL)	Øyvind Haug BEATRICE Installation Engineering Manager Mob: +47 916 27 674 Office: +47 22 88 65 09	MVBO / 233714000	40.2m x 9.0m x 5.0m	13.11.2017	OFTW
16		Coral Wind / UK	Workboat, UK MCA Cat.2 C-pod deployment	Aberdeen University	Bill Ruck Moray First Marine Ltd Tel 07775 802963 bill@moraymarine.com	2EMX8 / 235086491	14 x 5.1 x 1.2m	08.01.2018	OWF
17		Waterfall	Workboat, UK MCA Cat.2 C-pod deployment	Aberdeen University	Bill Ruck Moray First Marine Ltd Tel 07775 802963 bill@moraymarine.com	2CBT4 / 235071392	15 x 6m	08.01.2018	OWF
18		Seacat Intrepid	Crew Transfer Vessel / CTV	Seacat Services Ltd	Lea Hurst Marine Manager, Seacat Services Ltd 2 Mariners Way, Cowes, Isle of Wight +44 (0)1983 475315 lea.hurst@seacatservices.co.uk	2HWU6 / 235107284	27 x 10 x 1.5m	25.09.2017	OWF & OFTW