

Notice to Activities Associated with the Development of Beatrice Offshore Wind Farm

Date of Issue	1 st October 2017	Notice Number	LF000005-NTM-026-Rev01
---------------	------------------------------	---------------	------------------------

Please promulgate the following as a Notice to Mariners:

BOWL Export Cable EC1.1 Exposed Cable on Seabed

This Notice to Mariners gives details of the Export Cable (EC) exposed on the seabed in the Beatrice Offshore Windfarm construction site OfTO corridor.

1. Contact Details for Marine Coordination

The following contact can provide more information if required. Please note that specific queries can also be addressed to the relevant vessel or shore based representative.

Telephone Number (Day Operations)	+44 (0) 3302 020329
Emergency Contact (24/7)	+44 (0) 7342 028207
Email for Marine Coordinator	MC.Bowl@sse.com
Address	Unit 1 Harbour Office Wick Caithness KW1 5HA

2. Area of Planned Activity

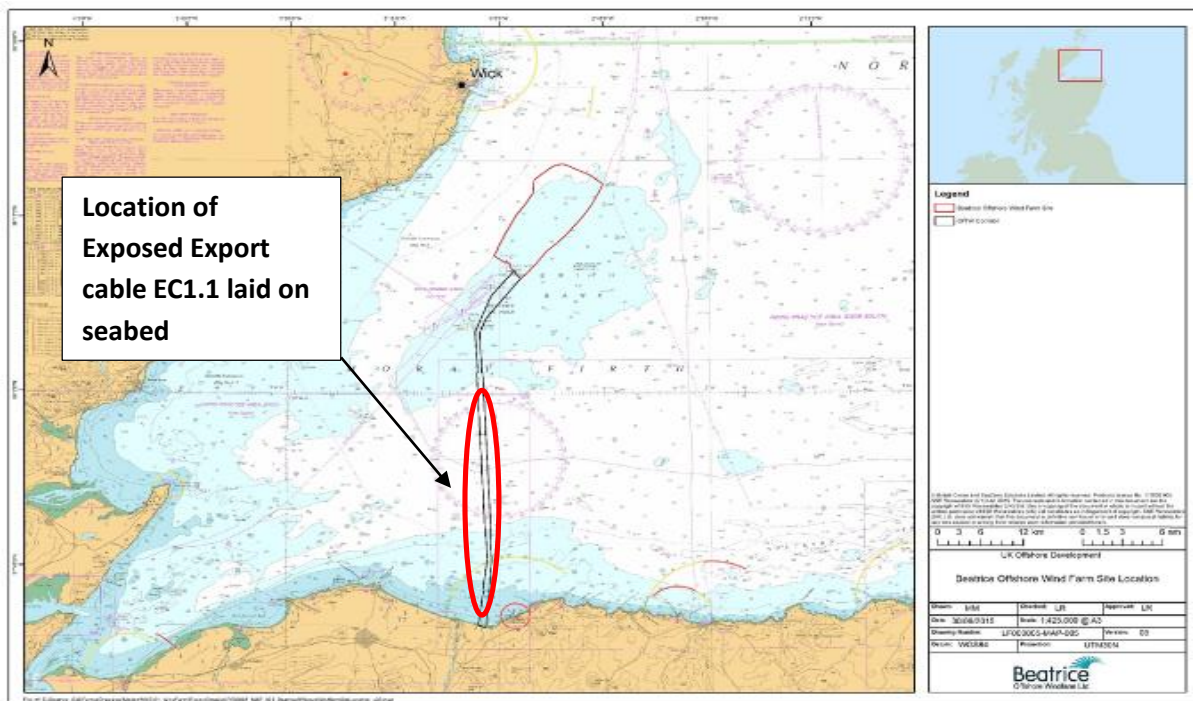


Fig.1 EC1.1 Cable laydown location, approximately 450m – 34km from the Portgordon Beach

NOTICE TO MARINERS

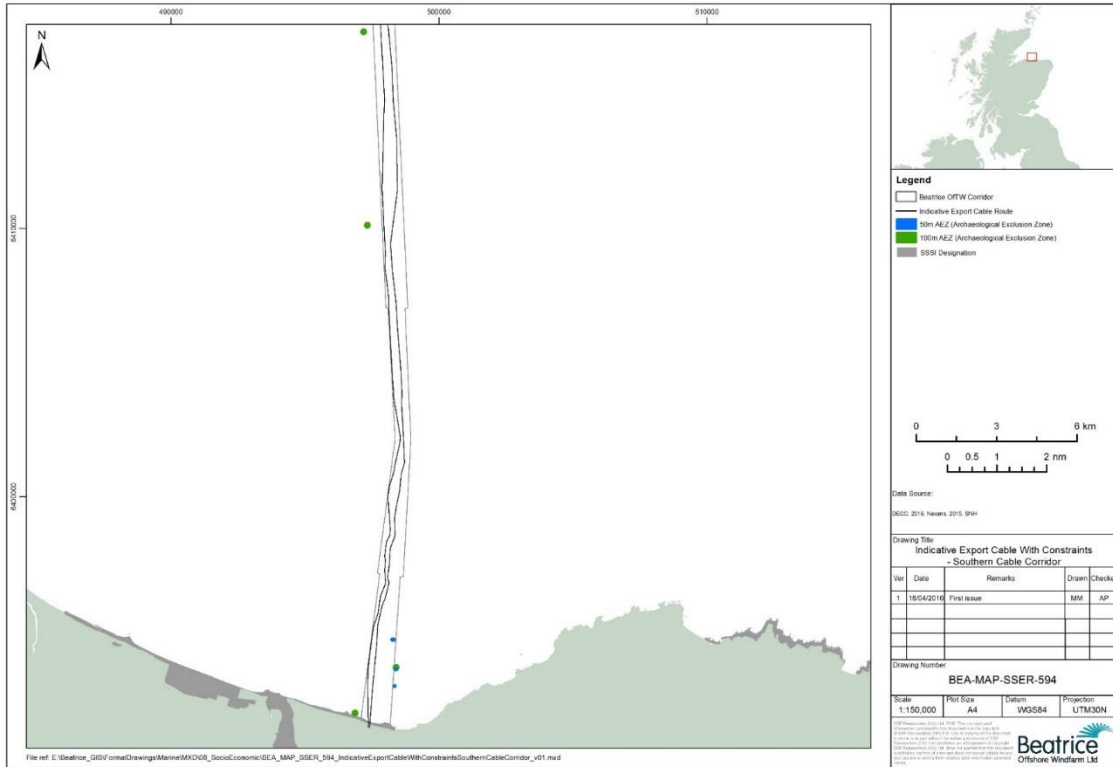


Fig 2. Chart of OFTO corridor and Export Cable indicative routes out to approx. KP30

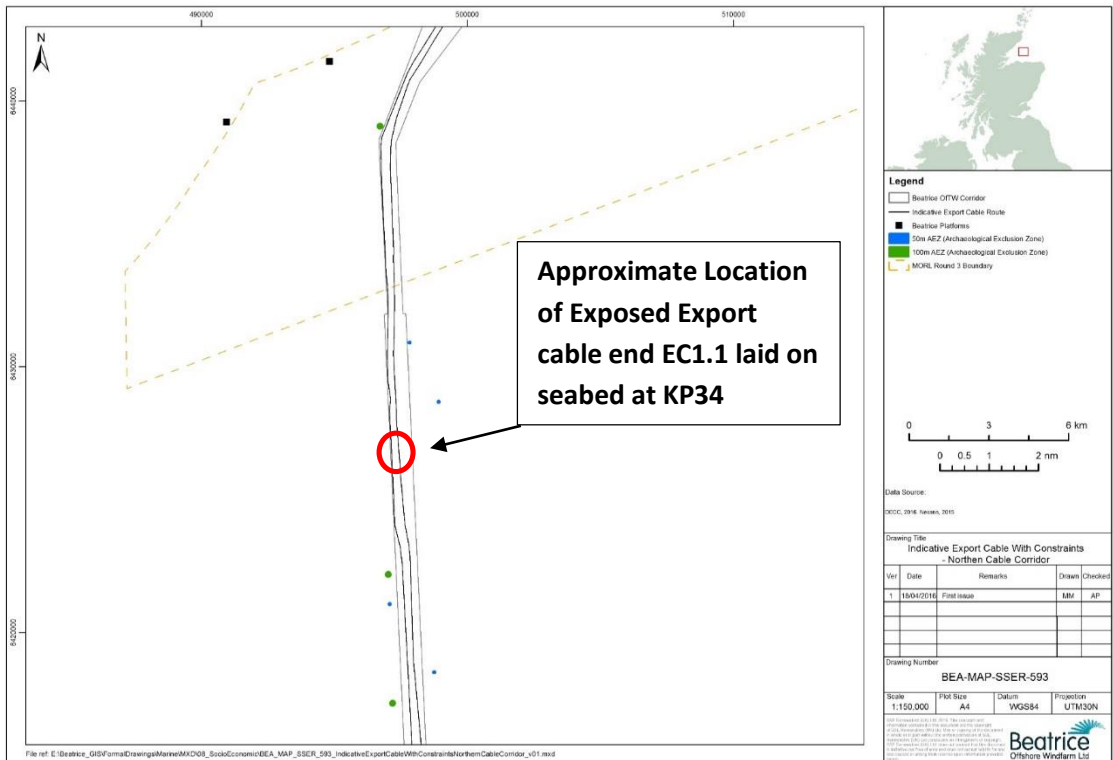


Fig 3. Proximate location of seaward end of exposed cable EC1.1 at KP34

LF000005-NTM-026 Rev01Notice to Mariners_ Exposed Export Cable EC1.1 on Seabed

Name and Registered Office: Beatrice Offshore Windfarm Limited. One Waterloo Street, Glasgow. G2 6AY

NOTICE TO MARINERS

Approximate location of cable pull in end EC1.1 near shore	Latitude WGS84	Longitude WGS84
KP 0.450 on EC1	57° 42.236'N	003°01.955'W
Approximate location of cable laydown end EC1.1	Latitude WGS84	Longitude WGS84
KP 34 on EC1	57° 58.250'N	003°02.290'W

3. Activity Description

On behalf of BOWL, Nexans Norway AS, using the cable laying vessel Skagerrak, have installed the first section of an export cable (EC1.1) from the cable pull in location close to Portgordon beach, out to a position around KP34 in the Beatrice Windfarm OfTO cable corridor. The cable will remain exposed on the seabed, unburied until the second part of the cable is laid. This is likely to be in late October or early November.

The exposed cable is particularly vulnerable to vessels engaged in trawling or fishing or vessels anchoring. All vessels engaged in these activities are requested to be particularly vigilant in the vicinity of this cable and avoid entering the specified OfTO corridor while doing so.

The exposed cable will be protected by two guard vessels, Fisher Boys, and Artemis who will guard and monitor the cable laydown area.


4. Vessels Associated with the Activity

The vessels that are involved with the described operation are the guard vessels Fisher Boys FR 54 and Artemis FR 809

Fisher Boys FR 54	
General Description and Dimensions:	Guard Vessel, L:20m / B: 6m
Call Sign:	MWHY7
MMSI:	234750000
Onshore Representative:	Øyvind Haug BEATRICE Installation Engineering Manager Mob: +47 916 27 674 Office: +47 22 88 65 09



NOTICE TO MARINERS

Artemis FR 809	
General Description and Dimensions:	L 23.1m / B 6.4m / D 2.25m
Call sign:	2SNV
MMSI:	235006582
Onshore representative	Øyvind Haug – Nexans Norway AS BEATRICE Installation Engineering Manager Mob: +47 916 27 674 Office: +47 22 88 65 09
	

5. General Safety Advice

All vessels engaged in the construction activity will exhibit appropriate lights and shapes prescribed by the International Regulations for Preventing Collisions at Sea; relative to their operations. All vessels engaged in the activity will also transmit an Automatic Identification System (AIS) message.

Use of Safety Zones within the Beatrice Offshore Windfarm Construction Area:

The Secretary of State for Business, Energy and Industrial Strategy (BEIS) has approved the use of safety zones under the Energy Act 2004 for the installation of wind turbines and offshore transformer module foundations/substructures within the Beatrice Offshore Windfarm. The approval was granted on the 17th March 2017.

The Secretary of State has declared Safety Zones under the following terms: During Construction

- 500 metres radius around each wind turbine, offshore transformer module and/or their substructures and foundations comprising the Beatrice Offshore Wind Farm whilst work is being performed as indicated by the presence of construction vessels.
- It is noted that the 500 metre safety zones will roll with the installation activity with no more than two construction vessels working at any one time. Vessels are advised that anchors associated with the construction vessels may extend outside of the 500 metre safety zone.

NOTICE TO MARINERS

- A 50 metres radius around each wind turbine, offshore transformer module and / or their substructure and foundations installed but waiting to be commissioned as part of the Beatrice Offshore Wind Farm.
- Positions of foundations installed will be promulgated within the Weekly Notice of Operations. Only vessels associated with the Beatrice Offshore Wind Farm construction may enter statutory Safety Zones with prior permission.

The duty Guard Vessels and Marine Coordination centre will be responsible for monitoring and policing the Safety Zones; and can be contacted directly for advice.

Further information on the application of Safety Zones can be obtained from the Marine Coordinator. Users are advised to keep clear of construction activities, including Safety Zones, within the Beatrice Offshore Windfarm construction area in line with Marine Guidance Note 372.

ALL VESSELS ARE REQUESTED to give all construction and support vessels a wide berth.

MARINERS ARE REMINDED to navigate with caution and keep continued watch on VHF Ch. 70 / 16 when navigating the area.

6. Dedicated Guard Vessels

The Guard Vessels 'Fisher Boys FR 54', and 'Artemis FR 809' will be in attendance along the cable route.

All vessels can be contacted on VHF CH16

5. Fisheries Liaison

Fisheries liaison associated with the activity will be co-ordinated by Brown and May Marine. For any commercial fishery queries please contact: Alex Winrow-Giffin, telephone: +44 (0)1379 872144 and mobile: +44 (0)7760 160039 or email: alex@brownmay.com

6. Distribution List

The distribution of this notice is as per email recipient's header. A central list of recipients is maintained by the Marine Coordinator; if you are not the appropriate recipient of these notices, or do not wish to receive the notices in the future, please contact us at the address included in Section 1 of this notice.

A copy of this notice can also be found at <https://www.beatricewind.com/>