

NOTICE TO MARINERS

Beatrice Offshore Windfarm Limited (BOWL) – Notice to Mariners March 2019

Notice to Activities Associated with the Development of Beatrice Offshore Wind Farm

Date of Issue	27 th February 2019	Notice Number	LF000005-NTM-054rev01
---------------	--------------------------------	---------------	-----------------------

Please promulgate the following as a notice to mariners:

Rock Installation Campaign – amended 27th February 2019

On Behalf of BOWL, Jan De Nul, using the Fall Pipe Vessel FPV Simon Stevin will install crushed rock at a location ~150m from WTG G3 on Cable H4-G3 in the south-eastern segment of the windfarm. The works are anticipated to last approximately 24 hours and take place within the window of ~3rd to 7th March 2019.

1. Contact Details for Marine Coordination

The following contact can provide more information if required. Please note that specific queries can also be addressed to the relevant vessel or shore based representative.

Telephone Number (Day Operations)	+44 (0) 3302 020329
Emergency Contact (24/7)	+44 (0) 7342 028207
Email for Marine Coordinator	MC.Bowl@sse.com
Address	Unit 1, Harbour Office Wick, Caithness KW1 5HA

2. Area of Planned Activity

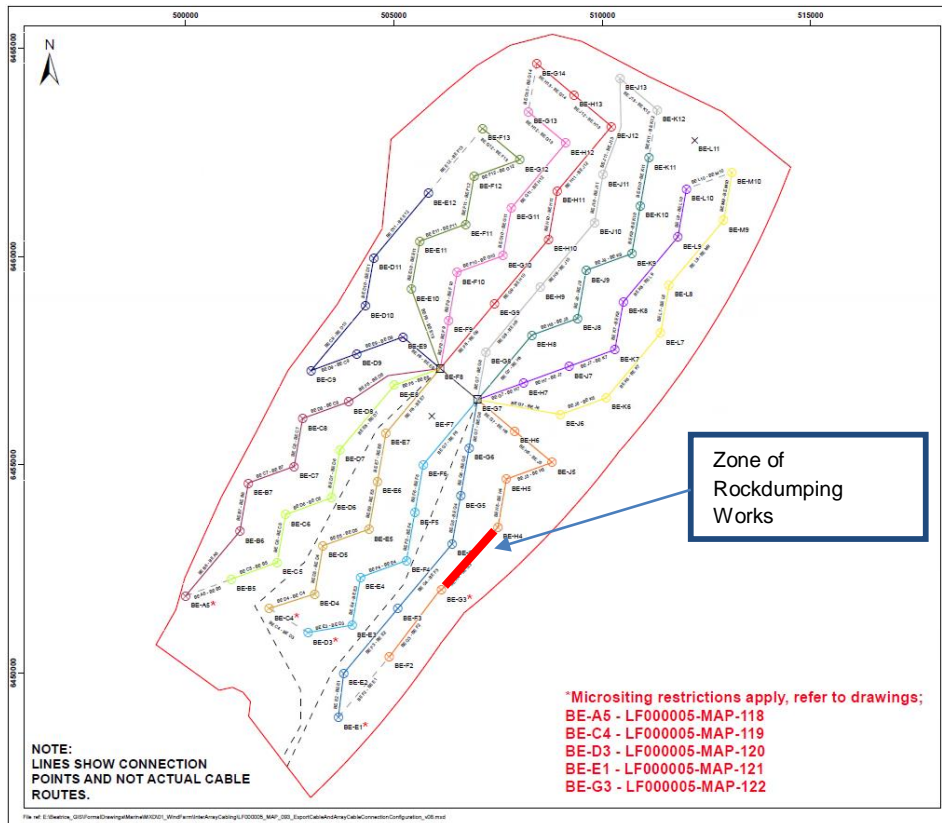


Fig 1 Location of Rock Placement Works

LF000005-NTM-54_ Rev 01 Notice to Mariners_ Inter Array Cable Rock Placement Remedial Work

NOTICE TO MARINERS

Cable Route	Start		End	
H4-G3	58° 12.61' N	2° 53.64' W	58° 12.60' N	2° 53.67' W

3. Vessel Associated with the Activity

The Fall Pipe Vessel 'Simon Stevin' is an ocean-going high powered vessel, equipped with a flexible fall pipe, which is positioned by means of its Remotely Operated Vehicle (ROV) at the outer end of the fall pipe. The vessel is equipped for Dynamic Positioning (DP2) operations, enabling the vessel to manoeuvre in any direction or remain in a fixed position.

Two large hydraulic excavators are mounted in the middle of each bunker. During rock installation, these excavators are used to feed the conveyor belt system to the fall pipe tower. The rock installation process is controlled by the FPROV at the bottom of the fall pipe, which together with the ship's position determines the position of the placed rock. The amount of installed material can be adjusted by setting the feeder output and the vessel's tracking speed.

FPV Simon Stevin	
General Description and Dimensions:	Length overall 191.5 m Breadth moulded 40 m Draft max. 9.2 m
Call Sign:	LXUB
MMSI:	253309000
On Board Contact:	V-Sat phone: +32 240 268 89
Offshore Manager / Party Chief:	Captain Direct: +32 240 268 90
E-mail:	captain@sv.jandenul.com
Onshore Representative:	Noemie Larue Noemie.larue@jandenul.com



4. Crew transfers

No Crew transfers for the Simon Stevin are anticipated during this operation.

5. Adverse Weather Conditions

NOTICE TO MARINERS



Should adverse weather occur during the works, the rock installation vessel will cease operation and hold position until suitable working weather returns. In case of extreme weather, the vessel will leave site for a port of refuge.

6. General Safety Advice

All vessels engaged in the construction activity will exhibit appropriate lights and shapes prescribed by the International Regulations for Preventing Collisions at Sea; relative to their operations. All vessels engaged in the activity will also transmit an Automatic Identification System (AIS) message.

Use of Safety Zones within the Beatrice Offshore Windfarm Construction Area:

The Secretary of State for Business, Energy and Industrial Strategy (BEIS) has approved the use of safety zones under the Energy Act 2004 for the installation of wind turbines and offshore transformer module foundations/substructures within the Beatrice Offshore Windfarm. The approval was granted on the 17th March 2017.

The Secretary of State has declared Safety Zones under the following terms: During Construction

- 500 metres radius around each wind turbine, offshore transformer module and/or their substructures and foundations comprising the Beatrice Offshore Wind Farm whilst work is being performed as indicated by the presence of construction vessels.
- It is noted that the 500 metre safety zones will roll with the installation activity with no more than two construction vessels working at any one time. Vessels are advised that anchors associated with the construction vessels may extend outside of the 500 metre safety zone.
- A 50 metres radius around each wind turbine, offshore transformer module and / or their substructure and foundations installed but waiting to be commissioned as part of the Beatrice Offshore Wind Farm.
- Positions of foundations installed will be promulgated within the Weekly Notice of Operations. Only vessels associated with the Beatrice Offshore Wind Farm construction may enter statutory Safety Zones with prior permission.

The Marine Coordination centre will be responsible for monitoring and policing the Safety Zones; and can be contacted directly for advice.

Further information on the application of Safety Zones can be obtained from the Marine Coordinator. Users are advised to keep clear of construction activities, including Safety Zones, within the Beatrice Offshore Windfarm construction area in line with Marine Guidance Note 372.

ALL VESSELS ARE REQUESTED to give all construction and support vessels a wide berth.

MARINERS ARE REMINDED to navigate with caution and keep continued watch on VHF Ch. 70 / 16 when navigating the area.

7. Fisheries Liaison

Fisheries liaison associated with the activity will be co-ordinated by Brown and May Marine. For any commercial fishery queries please contact Jen Miller Tel: +44 (0)1379 872144 Mobile: +44 (0)7519 106002 or email: jen.miller@brownmay.com

8. Distribution List

The distribution of this notice is as per email recipient's header. A central list of recipients is maintained by the Marine Coordinator; if you are not the appropriate recipient of these notices, or do not wish to receive the notices in the future, please contact us at the address included in Section 1 of this notice.

A copy of this notice can also be found at <https://www.beatricewind.com/>